

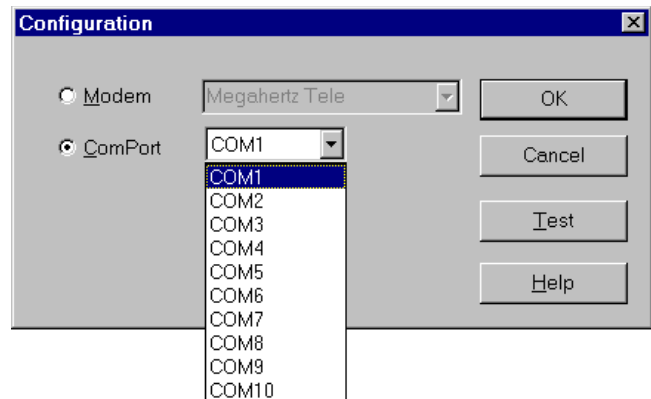
Supplementary Manual for AL-PCS/WIN-E (SW0D5F-ALVLS-E): Upgrade Information (from Ver.2.00 to Ver.2.10)

This manual supplements α Software Manual Revision E (Manual number: JY992D74001E) for the AL-PCS/WIN-E (SW0D5F-ALVLS-E) application software.

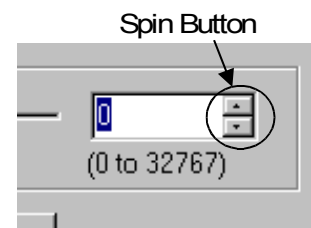
1. Upgrade

These following functions are added in the upgraded product (Ver. 2.00 to Ver. 2.10).

- Supports Windows[®] XP.
- Up to COM10 is available for COM port setting.



- The spin button is added to the edit box in a function block dialog box.
When setting a value, a number can be increased or decreased easily using the new spin button.



- The Import/Export function for the User Function Block is added.
Registered UserFunc (User Function Block) data stored in the library folder can be transferred and registered from one PC to another.
For operation about the Import/Export function, refer to Chapter 2.

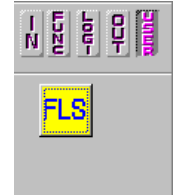


2. Operation for Export/Import Registered User Function Block

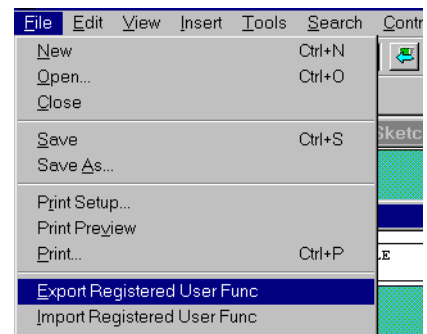
For registering the User Function Block, please see section 6.8 in α Software Manual (Manual number: JY992D74001E).

2.1 Export Registered User Function Block

1) Click the icon of the UserFunc to Export.

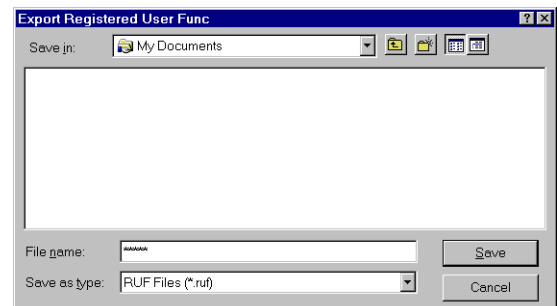


2) Select “Export Registered User Func” from the File menu.



3) In the “Export Registered User Func” dialog box, the folder that saves the exported file is chosen and enter the UserFunc name and click the save button.

*.ruf file, *_ON.bmp file and *_OFF.bmp file should be stored together in the chosen folder.



2.2 Import Registered User Function Block

1) Select “Import Registered User Func” from the File Menu.

2) “Import Registered User Func” dialog box will be displayed.

In the “Import Registered User Func” dialog box, specify any folder, which holds the data to Import, and enter (select) the name of the Imported data *1, and click the Open button.

1 The Imported data (.ruf file, *_ON.bmp file and *_OFF.bmp file) needs to be in the same folder.

