

Siemens S7++

INTERFACE LINK

**Import data into your MES
the easy way**



e-Factory
Partner Product



No PLC Ethernet card needed



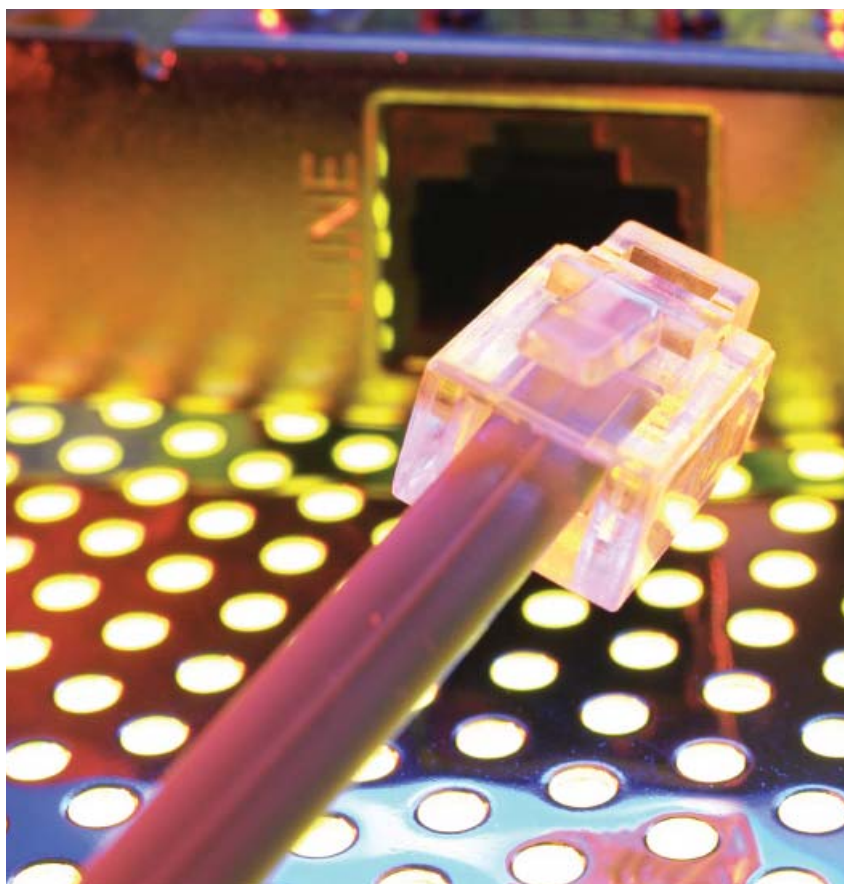
Add adaptor without disturbing existing installation



Quick and easy process

More flexibility

Less cost



MES solutions

As part of the iQ Automation Platform, Mitsubishi's MES IT module brings the best of IT and Factory Automation together in to a single module which simply slots into your iQ PLC rack.

It benefits from the high reliability and operational life expected from industrial hardware combined with the flexibility of configuration instead of tedious programming.

This enabling technology opens up your shop floor devices to provide a flood of easily selectable real time data directly in to your local or enterprise information systems and databases.

Quick and easy

One such device is the Siemens S7++ Interface from our eF@ctory Alliance Partner, IBH Softec.

This unique device enables you to control your PC using a VPN or a sorter, without an Ethernet card installed.

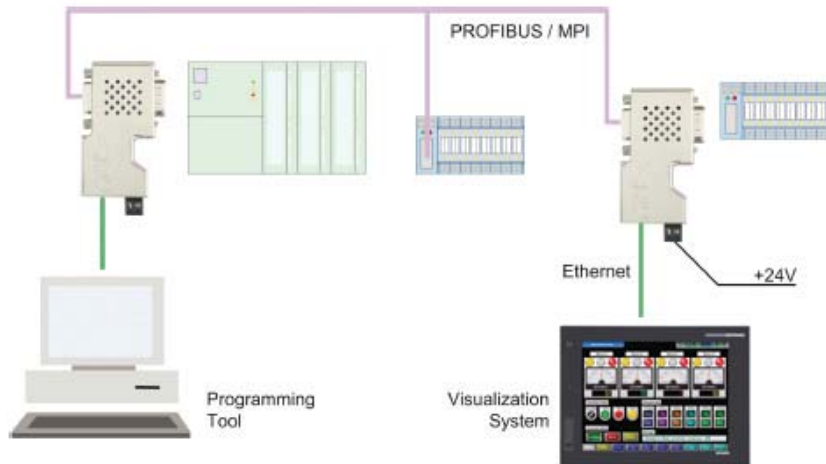
This quick and easy solution is a cost effective way of getting information out of your Siemens PLC, without disturbing the existing installation.

Flexible solution

Instead of connecting S7 200®, S7 300® or S7 400® PLC's to a PC via Ethernet, a more flexible solution is to use the IBH Link S7++ with a hub or switch or via a Crossover cable direct with your PC network card. The protocol used is standard TCP/IP, so you can control your system using VPN, a router or an Internet connection.

On-line functions

With the IBH Link S7++ online functions are possible via Profibus DP with up to 12 Mbit/s or via PPI/MPI®. The IBH Link S7++ will reduce costs because there is no need for the CP's from Siemens not the software Simatic: The driver for SIMATIC MicroWin®, STEP®, WinCC, ProTool and S7 for Windows® is supplied on a CD. The IBH OPC Server can also be used to connect your visualisation with the PLC via IBH Link S7++.



Improved flow of information

Additionally, through another Mitsubishi e-F@ctory Partner, Wonderware, process users can reduce their programming and Scada development time with the direct integration of Wonderware's InTouch Scada and Mitsubishi's PX Developer Process CPU programming tool.

Simple configuration

The IBHNet driver enables you to gain direct variable access via standard programming languages like Visual Basic or Delphi. The configuration of the adaptor is very easy and normally done in a few minutes. It also automatically detects whether it's connected to a 10 or 100Mbit/s network. The power supply can be from the MPI®/DP interface, if available, otherwise via the integrated 24V plug.

Programming and supported languages

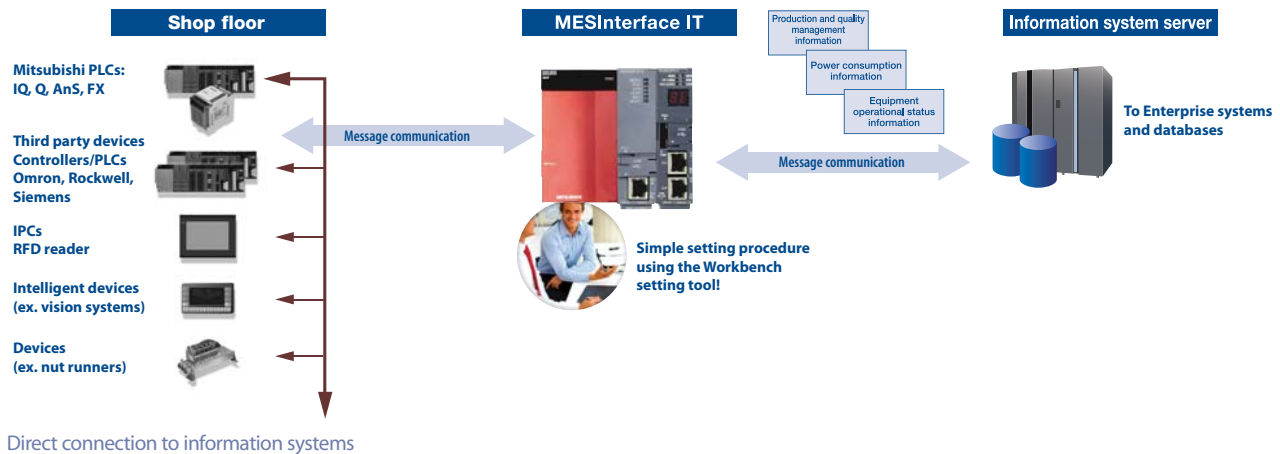
Besides the programming capabilities, an application programming interface for HMI applications is also included.

For Windows operating systems, there are samples in the languages Visual Basic®, Visual C®, C++®, VB.net®, C#®, Delphi®, Java®, Excel® included. Linux samples are also included.

Key features

- 16 PC-connections at the same time
- 32 MPI®/DP-connections at the same time
- Automatic Baud rate-detection
- RFC1006
- RJ45-plug with autodetect integrated
- PG(PU) connector
- Diagnostic LEDs
- Power supply from the MPI®/DP interface
- Connection also to passive nodes with power supply via integrated 24V connector

Connectivity ///



Terms used:

CRM	Customer Relationship Management
ERP	Enterprise Resource Planning
ESB	Enterprise Service Bus
IBM MQ	IBM Message Queue
JMS	Java Messaging Service
MES	Manufacturing Executon System
PAC	Programmable Automation Controller
PLC	Programmable Logic Controller
ROI	Return On Investment
SIB	Service Integration Bus
SOA	Service Oriented Architecture

EUROPEAN BRANCHES

MITSUBISHI ELECTRIC EUROPE B.V. Radlická 714/113a CZ-158 00 Praha 5 Phone: +420 (0)251 551 470	CZECH REPUBLIC
MITSUBISHI ELECTRIC EUROPE B.V. 25, Boulevard des Bouvets F-92741 Nanterre Cedex Phone: +33 (0)1 55 68 55 68	FRANCE
MITSUBISHI ELECTRIC EUROPE B.V. Göthaer Straße 8 D-40880 Ratingen Phone: +49 (0)2102 / 486-0	GERMANY
MITSUBISHI ELECTRIC EUROPE B.V. Westgate Business Park, Ballymount IRL-Dublin 24 Phone: +353 (0)1 4198800	IRELAND
MITSUBISHI ELECTRIC EUROPE B.V. Viale Colleoni 7 I-20041 Agrate Brianza (MI) Phone: +39 039 / 60 53 1	ITALY
MITSUBISHI ELECTRIC EUROPE B.V. Carretera de Rubí 76-80 E-08190 Sant Cugat del Vallés (Barcelona) Phone: 902 131121 // +34 935653131	SPAIN
MITSUBISHI ELECTRIC EUROPE B.V. Travellers Lane UK-Hatfield, Herts. AL10 8XB Phone: +44 (0)1707 / 27 61 00	UK

EUROPEAN REPRESENTATIVES

GEVA Wiener Straße 89 AT-2500 Baden Phone: +43 (0)2252 / 85 55 20	AUSTRIA	B:TECH A.S. U Borové 69 CZ-58001 Havlíčkův Brod Phone: +420 (0)569 777 777	CZECH REPUBLIC	Beijer Electronics SIA Vestienas iela 2 LV-1035 Rīga Phone: +371 (0)784 / 2280	LATVIA	MPL Technology Sp. z o.o. Ul. Krakowska 50 PL-32-083 Balice Phone: +48 (0)12 / 630 47 00	POLAND	Beijer Electronics AB Box 426 SE-20124 Malmö Phone: +46 (0)40 / 35 86 00	SWEDEN	ILAN & GAVISH Ltd. 24 Shenkar St., Kiryat Arie IL-49001 Petah-Tiqva Phone: +972 (0)3 / 922 18 24	ISRAEL
TEHNIKON Oktyabrskaya 16/5, Off. 703-711 BY-220030 Minsk Phone: +375 (0)17 / 210 46 26	BELARUS	Beijer Electronics A/S Lykkegårdsvej 17, 1. DK-4000 Roskilde Phone: +45 (0)46 / 75 76 66	DENMARK	Beijer Electronics UAB Savanoriu Pr. 187 LT-02300 Vilnius Phone: +370 (0)5 / 232 3101	LITHUANIA	Sirius Trading & Services Aleea Lacul Morii Nr. 3 RO-060841 Bucuresti, Sector 6 Phone: +40 (0)21 / 430 40 06	ROMANIA	Econotec AG Hinterdorfstr. 12 CH-8309 Nürensdorf Phone: +41 (0)44 / 838 48 11	SWITZERLAND	TEXEL ELECTRONICS Ltd. 2 Ha'umanut, P.O.B. 6272 IL-42160 Netanya Phone: +972 (0)9 / 863 39 80	ISRAEL
Koning & Hartman b.v. Woluwelaan 31 BE-1800 Vilvoorde Phone: +32 (0)2 / 257 02 40	BELGIUM	Beijer Electronics Eesti OÜ Pänu mnt.160i EE-11317 Tallinn Phone: +372 (0)6 / 51 81 40	ESTONIA	ALFATRADE Ltd. 99, Paola Hill Malta- Paola PLA 1702 Phone: +356 (0)21 / 697 816	MALTA	Craft Con. & Engineering d.o.o. Bulevar Svetog Cara Konstantina 80-86 SER-18106 Nis Phone: +381 (0)18 / 292-24-4/5	SERBIA	GTS Bayraktar Bulvarı Nutuk Sok. No:5 TR-34775 Yukari ISTANBUL Phone: +90 (0)216 526 39 90	TURKEY	CEG INTERNATIONAL Cebaco Center/Block A Autostrade DORA Lebanon - Beirut Phone: +961 (0)1 / 240 430	LEBANON
INEA BH d.o.o. Aleja Lipa 56 BA-71000 Sarajevo Phone: +387 (0)33 / 921 164	BOSNIA AND HERZEG.	Beijer Electronics OY Jaakonkatu 2 FIN-01620 Vantaa Phone: +358 (0)207 / 463 500	FINLAND	INTEHISIS srl bld. Traian 23/1 MD-2060 Kishinev Phone: +373 (0)22 / 66 4242	MOLDOVA	INEA SR d.o.o. Izletnicka 10 SER-113000 Smederevo Phone: +381 (0)26 / 617 163	SERBIA	CSC Automation Ltd. 4-B, M. Raskovoyi St. UA-02660 Kiev Phone: +380 (0)44 / 494 33 55	UKRAINE	CBI Ltd. Private Bag 2016 ZA-1600 Isando Phone: +27 (0)11 / 928 2000	SOUTH AFRICA
AKHNATON 4 Andrej Ljapchev Blvd. Pb 21 BG-1756 Sofia Phone: +359 (0)2 / 817 6004	BULGARIA	UTECO A.B.E.E. S, Mavrogenous Str. GR-18542 Piraeus Phone: +30 211 / 1206 900	GREECE	HIFLEX AUTOM. B.V. Wolweverstraat 22 NL-2984 CD Ridderkerk Phone: +31 (0)180 - 46 60 04	NETHERLANDS	AutoCont Control s.r.o. Radimského 47 SK-02601 Dolny Kubin Phone: +421 (0)43 / 5868210	SLOVAKIA	CS MTrade Slovensko, s.r.o. Vajanského 58 SK-92101 Piestany Phone: +421 (0)33 / 7742 760	SLOVAKIA		
INEA CR d.o.o. Losinjka 4 a HR-10000 Zagreb Phone: +385 (0)1 / 36940 -01/-02/-03	CROATIA	MELTRADE Ltd. Fertő utca 14. HU-1107 Budapest Phone: +36 (0)1 / 431-9726	HUNGARY	Koning & Hartman b.v. Haarlerbergweg 21-23 NL-1101 CH Amsterdam Phone: +31 (0)20 / 587 76 00	NETHERLANDS	Beijer Electronics AS Postboks 487 NO-3002 Drammen Phone: +47 (0)32 / 24 30 00	NORWAY	INEA d.o.o. Stegne 11 SI-1000 Ljubljana Phone: +386 (0)1 / 513 8100	SLOVENIA		
AutoCont C.S. s.r.o. Technologická 374/6 CZ-708 00 Ostrava-Pustkovec Phone: +420 595 691 150	CZECH REPUBLIC	KAZPROMAUTOM. Ltd. Mustafina Str. 7/2 KAZ-470046 Karaganda Phone: +7 7212 / 50 11 50	KAZAKHSTAN								



Mitsubishi Electric Europe B.V. /// FA - European Business Group /// Gothaer Straße 8 /// D-40880 Ratingen /// Germany
Tel.: +49(0)2102-4860 /// Fax: +49(0)2102-4861120 /// info@mitsubishi-automation.com /// www.mitsubishi-automation.com

Specifications subject to change /// Art. no. 228428 /// 07.2009

All trademarks and copyrights acknowledged.