

# Three Year Warranty

## Controller and HMI Products

## One Less Thing To Worry About

Peace of mind for your plant



**FREE  
REPLACEMENT**

If it breaks, we will replace it

**SUPERIOR  
QUALITY**

Dependable Mitsubishi technology

**RELIABLE  
PERFORMANCE**

Productivity to rely on

# Peace of Mind



Performance you can depend on

## A world leader

Mitsubishi Electric is well known for producing automation products that offer an industry leading combination of performance and reliability. Our global installed base numbers in the tens of millions of units and countless plants worldwide depend on these systems for their existence. We have lead the industry in a range of innovations, from the first digital inverter, through to the first compact PLC. We continue to innovate, offering our customers a variety of patented technologies, such as real time vibration control in our motion systems.



Benefit from the strength of a global leader

## The new level of quality

However, without reliability, these achievements mean very little. Without dependability, a global leadership position can only be dreamed about. This is why Mitsubishi Electric is introducing a three year warranty on our HMI and controller products\*. From now on, the selection of Mitsubishi's equipment for a system has extra peace of mind built in. So, no matter whether the application uses an economical Alpha controller, or is a complete transfer line built around the iQ Platform with multiple GOT operator stations, the same warranty benefits will apply.



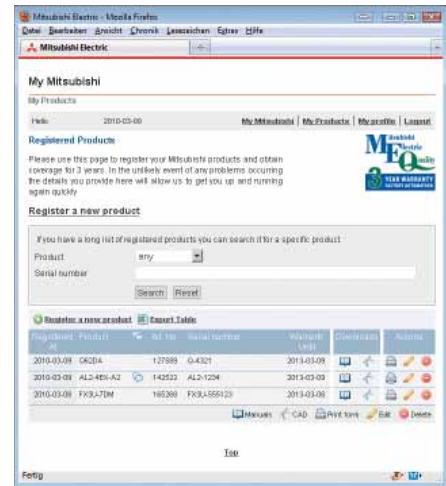
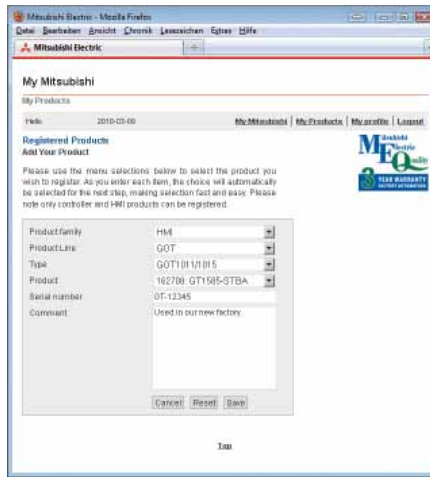
Controller and HMI products are covered

\* Includes Alpha, FX Family, System Q, iQ Platform and GOT models only. Excludes consumable parts, like batteries, backlights, protections sheets etc.

## How It Works

Taking advantage of this programme is easy. Simply locate the serial number of your controller or HMI product, and use this to register the product at our website. The registration process uses a simple drop down menu format to make it easy to select the correct information.

Once the product is registered, it's covered for three years against defects in design or manufacturing. The website also makes it easy to manage registration information. Once you have some products registered, you can create a report of the key information relating to each item for use in your own company's records.



Registration is quick and easy; review your registrations at any time

## MyMitsubishi

As a side benefit to warranty registration, taking part in this programme also provides access to the significant technical resources available in the MyMitsubishi section of our website.

MyMitsubishi offers a wealth of material, including over 11,000 documents relating to all products, plus over 27,000 FAQs. Other valuable resources include a comprehensive library of design information such as configuration tools and CAD data. Most of these materials are available in 19 different languages, ensuring we speak your language no matter which European language you speak.



MyMitsubishi provides a wealth of valuable support information

## Mitsubishi Electric Quality

This warranty is just one of the ways Mitsubishi Electric provides peace of mind to its customers. This commitment to quality is the foundation of our business and one of the key reasons for our global leadership position in the automation industry. We maintain this commitment by developing our principal technologies in house, insuring we can be sure that our products offer the features our customers need to stay ahead. Furthermore, these technologies are incorporated into products that are manufactured in our own factories, meaning we have complete control of supply and availability. The end result is an automation partner who truly understands our customers' manufacturing challenges, because we are a global manufacturing enterprise too. This is all symbolized in the "Mitsubishi Electric Quality" logo, a sign that a product can be used with confidence.





## What's covered?

The following products are covered by the three year warranty programme:

- Alpha 2 Series
- FX Family of compact PLCs (FX1S, FX1N, FX3G, FX3U and FX3UC)
- System Q modular PLC
- iQ Automation Platform
- GOT HMI family

[www.meq3yearwarranty.com](http://www.meq3yearwarranty.com)

### EUROPEAN BRANCHES

MITSUBISHI ELECTRIC EUROPE B.V. D-40880 Ratingen Phone: +49 (0)2102 / 486-0	GERMANY
MITSUBISHI ELECTRIC EUROPE B.V. CZ-158 00 Praha 5 Phone: +420- 251 551 470	CZECH REPUBLIC
MITSUBISHI ELECTRIC EUROPE B.V. F-92741 Nanterre Cedex Phone: +33 (0)1 / 55 68 55 68	FRANCE
MITSUBISHI ELECTRIC EUROPE B.V. I-20041 Agrate Brianza (MB) Phone: +39 039 / 60 53 1	ITALY
MITSUBISHI ELECTRIC EUROPE B.V. PL-32-083 Balice Phone: +48 (0)12 / 630 47 00	POLAND
MITSUBISHI ELECTRIC EUROPE B.V. E-08190 Sant Cugat del Vallés (Barcelona) Phone: 902 131121 // +34 935653131	SPAIN
MITSUBISHI ELECTRIC EUROPE B.V. UK-Hatfield, Herts. AL10 8XB Phone: +44 (0)1707 / 27 61 00	UK

### EUROPEAN REPRESENTATIVES

GEVA Wiener Straße 89 AT-2500 Baden Phone: +43 (0)2252 / 85 55 20	AUSTRIA	AutoCont CS. s.r.o. Technologická 374/6 CZ-708 00 Ostrava-Pustkovec Phone: +420 595 691 150	CZECH REPUBLIC	KAZPROMAUTOM. Ltd. Mustafina Str. 7/2 KAZ-470046 Karaganda Phone: +7 7212 / 50 11 50	KAZAKHSTAN	Beijer Electronics AS Postboks 487 NO-3002 Drammen Phone: +47 (0)32 / 24 30 00	NORWAY	Beijer Electronics AB Box 426 SE-20124 Malmö Phone: +46 (0)40 / 35 86 00	SWEDEN	TELEX ELECTRONICS Ltd. 2 Ha'umanut, P.O.B. 6272 IL-42160 Netanya Phone: +972 (0)9 / 863 39 80	ISRAEL
TEHNIKON Oktyabrskaya 16/5, Off. 703-711 BY-220030 Minsk Phone: +375 (0)17 / 210 46 26	BELARUS	B-ELECTRIC, s.r.o. Mladoboleslavská 812 CZ-197 00 Praha 19 - Kbely Phone: +420 286 850 848	CZECH REPUBLIC	Beijer Electronics SIA Vestienas iela 2 LV-1035 Riga Phone: +371 (0)784 / 2280	LATVIA	Sirius Trading & Services Aleea Lacul Morii Nr. 3 RO-060841 Bucuresti, Sector 6 Phone: +40 (0)21 / 430 40 06	ROMANIA	Omni Ray AG Im Schörl 5 CH-8600 Dübendorf Phone: +41 (0)44 / 802 28 80	SWITZERLAND	CEG INTERNATIONAL Gebaco Center/Block A Autostrade DORA Lebanon - Beirut Phone: +961 (0)1 / 240 430	LEBANON
ESCO D & A Culliganlaan 3 BE-1831 Diegem Phone: +32 (0)2 / 717 64 30	BELGIUM	Beijer Electronics A/S Lykkegårdsvej 17, 1. DK-4000 Roskilde Phone: +45 (0)46 / 75 76 66	DENMARK	Beijer Electronics UAB Savanoriu Pr. 187 LT-02300 Vilnius Phone: +370 (0)5 / 232 3101	LITHUANIA	Craft Con. & Engineering d.o.o. Bulevar Svetog Cara Konstantina 80-86 SERBIA SER-18106 Nis Phone: +381 (0)18 / 292-24-4/5	SERBIA	GTS Bayraktar Bulvarı Nutuk Sok. No:5 TR-34775 Yukari ISTANBUL Phone: +90 (0)216 526 39 90	TURKEY	CBI Ltd. Private Bag 2016 ZA-1600 Isando Phone: +27 (0)11 / 977 0770	SOUTH AFRICA
Koning & Hartman b.v. Woluwelaan 31 BE-1800 Vilvoorde Phone: +32 (0)2 / 257 02 40	BELGIUM	Beijer Electronics Eesti OÜ Pärnu mnt.1601 EE-11317 Tallinn Phone: +372 (0)6 / 51 81 40	ESTONIA	ALFATRADE Ltd. 99, Paola Hill Malta-Paola PLA 1702 Phone: +356 (0)21 / 697 816	MALTA	INEA SR d.o.o. Izletnička 10 SER-113000 Smederevo Phone: +381 (0)26 / 617 163	SERBIA	CSC Automation Ltd. 4-B, M. Raskovoyi St. UA-02660 Kiev Phone: +380 (0)44 / 494 33 55	UKRAINE	ILAN & GAVISH Ltd. 24 Shenkar St., Kiryat Arie IL-49001 Petah-Tiqva Phone: +972 (0)3 / 922 18 24	ISRAEL
INEA BH d.o.o. Aleja Lipa 56 BA-71000 Sarajevo Phone: +387 (0)33 / 921 164	BOSNIA AND HERZEG.	Beijer Electronics OY Jaakonkatu 2 FIN-01620 Vantaa Phone: +358 (0)207 / 463 500	FINLAND	INTEHISIS srl bld. Traian 23/1 MD-2060 Kishinev Phone: +373 (0)22 / 66 4242	MOLDOVA	AutoCont Control s.r.o. Radlinského 47 SK-02601 Dolny Kubin Phone: +421 (0)43 / 5868210	SLOVAKIA	CS MTrade Slovensko, s.r.o. Vajanského 58 SK-92101 Piestany Phone: +421 (0)33 / 7742 760	SLOVAKIA		
AKHNATON 4 Andrej Ljapchev Blvd. Pb 21 BG-1756 Sofia Phone: +359 (0)2 / 817 6004	BULGARIA	UTECO A.B.E.E. 5, Mavrogenous Str. GR-18542 Piraeus Phone: +30 211 / 1206 900	GREECE	HIFLEX AUTOM. B.V. Wolvenverstraat 22 NL-2984 CD Ridderkerk Phone: +31 (0)180 - 46 60 04	NETHERLANDS	CS MTrade Slovensko, s.r.o. Stagne 11 INEA d.o.o. SI-1000 Ljubljana Phone: +386 (0)1 / 513 8100	SLOVENIA				
INEA CR d.o.o. Losinjka 4 a HR-10000 Zagreb Phone: +385 (0)1 / 36940-01 / 02 / 03	CROATIA	MELTRADE Ltd. Fertő utca 14. HU-1107 Budapest Phone: +36 (0)1 / 431-9726	HUNGARY	Koning & Hartman b.v. Haarlerbergweg 21-23 NL-1101 CH Amsterdam Phone: +31 (0)20 / 587 76 00	NETHERLANDS						



Mitsubishi Electric Europe B.V. // FA - European Business Group // Gothaer Straße 8 // D-40880 Ratingen // Germany  
Tel.: +49(0)2102-4860 // Fax: +49(0)2102-4861120 // info@mitsubishi-automation.com // www.mitsubishi-automation.com

Specifications subject to change // Art. no. 233558-A // 03.2010

All trademarks and copyrights acknowledged.