

MITSUBISHI

GT15 CF Card extension unit

User's Manual

GT15-CFEX-C08SET
Set of GT15-CFEX, GT15-CFEXIF, and GT15-C08CF

Thank you for purchasing the GOT1000 Series.

Prior to use, please read both this manual and detailed manual thoroughly to fully understand the product.

MODEL	GT15-CFEX-C08SET-U
MODEL CODE	1D7M64
IB(NA)-0800367-B(0707)MEE	

GRAPHIC OPERATION TERMINAL
GOT1000

SAFETY PRECAUTIONS

(Be sure to read these instructions before use.)

Before using this product, read this and relevant manuals carefully and handle the product correctly with full attention to safety. Note that these precautions apply only to this product. In this manual, SAFETY PRECAUTIONS are classified into 2 levels: "DANGER" and "CAUTION".

DANGER Indicates that incorrect handling may cause hazardous conditions, resulting in death or severe injury.

CAUTION Indicates that incorrect handling may cause hazardous conditions, resulting in medium or slight personal injury or physical damage.

Under some circumstances, failure to observe the CAUTION level instructions may also lead to serious accidents. Be sure to observe the instructions of both levels to ensure the safety. Please keep this manual in a safe place for future reference and also pass this manual on to the end user.

Design precautions

CAUTION

- Do not install the control lines or communication cables together with the main circuit or power lines, or bring them close to each other. Keep a distance of 100mm (3.9inch) or more between them. Failure to do so may cause malfunctions due to noise.

Installation precautions

DANGER

- Be sure to shut off all phases of the external power supply used by the system before mounting or removing this unit to/from the GOT. Not doing so can cause the unit to fail or malfunction.
- When installing this unit, wear a wrist strap to prevent the unit from being damaged by static electricity.
- Be sure to shut off all phases of the external power supply of the GOT main unit before connecting the cable to this unit. Not doing so can cause the unit to fail or malfunction.

CAUTION

- Use this unit under the environment specified in the GT15 User's Manual. Otherwise, it may cause electric shocks, fires, malfunctions, product deterioration or damage.
- When installing the GOT side installation unit, fit it to the connection interface of the GOT and tighten the mounting screws. When installing the control panel side installation unit, install it on the control panel and tighten the screws of the installation fittings. If the screw is too loose, it may cause a drop of the unit, a failure or malfunctions. Tightening the screw excessively may damage the screw and/or the unit, resulting in a drop of the unit, a failure or malfunctions.
- When installing a CF card into this unit, be sure to insert it into the card slot of this unit.
- Before inserting or removing a CF card into/from this unit, turn the CF card access switch off. Failure to do so may corrupt data on the CF card.
- When removing a CF card from the GOT, support it by hand, as it may pop out. Failure to do so may cause the CF card to drop from the unit, resulting in a damage or failure.

Wiring precautions

DANGER

- Be sure to shut off all phases of the external power supply used by the system before wiring. Failure to do so may result in an electric shock, product damage or malfunctions.

CAUTION

- Carefully prevent foreign matter such as dust or wire chips from entering this unit. Failure to do so may cause a fire, failure or malfunctions.
- Plug the cable into the connector of the connected unit and tighten the mounting screws. If the screw is too loose, it may cause a short circuit or malfunctions. If too tight, it may damage the screw and/or the unit, resulting in a short circuit or malfunctions.

Startup and maintenance precautions

DANGER

- Be sure to shut off all phases of the external power supply of the GOT main unit before starting cleaning. Not doing so can cause the unit to fail or malfunction.

CAUTION

- Do not disassemble or modify this unit and CF card. Doing so can cause failure, malfunctions, personal injuries and/or a fire.
- Do not touch the conductive and electronic parts of this unit directly. Doing so can cause a unit malfunction or failure.
- The cable connected to this unit must be run in a duct or clamped. Not doing so can cause the unit or cable to be damaged due to the dangling, motion or accidental pulling of the cable or can cause a malfunction due to a cable connection fault.
- When unplugging the cable connected to this unit, do not hold and pull the cable portion. Doing so can cause the unit or cable to be damaged or can cause a malfunction due to a cable connection fault.
- Do not drop or apply strong impact to this unit or the CF card. Doing so may damage the unit or CF card.
- Before handling this unit, touch a grounded metal object to discharge the static electricity from the human body. Failure to do so may cause failure or malfunctions of the unit.

Disposal precautions

CAUTION

- When disposing of the product, treat it as an industrial waste.

Transportation precautions

CAUTION

- Make sure to transport this unit in the manner it will not be exposed to the impact exceeding the impact resistance described in the general specifications of GT15 User's Manual, as it is a precision device. Failure to do so may cause the unit to fail. Check if the unit operates correctly after transportation.

MANUALS

The following shows manuals relevant to this product.

Detailed Manual

Manual name	Manual number (Model code)
GT15 User's Manual (Sold separately)	SH-080528 (1D7M23)

Relevant Manuals

For relevant manuals, refer to the PDF manuals stored with the drawing software used.

© 2006 MITSUBISHI ELECTRIC CORPORATION

Compliance with the EMC and Low Voltage Directives

When incorporating the Mitsubishi GOT into other machinery or equipment and keeping compliance with the EMC and low voltage directives, refer to "EMC Directives and Low Voltage Directives" of the manual (GT15 General Description) included with the GOT used. The CE logo is printed on the rating plate of the GOT, indicating compliance with the EMC and low voltage directives.

Packing List

The following items are included.

Model	Product	Quantity
GT15-CFEX-C08SET	Control panel side installation unit	1
	Installation fitting	2
	CF card cover fixing screw	1
	GOT side installation unit	1
	Fixing screw for GOT side installation unit	2
GT15-C08CF	Shorting bar	1
	Connection cable (0.8m)	1

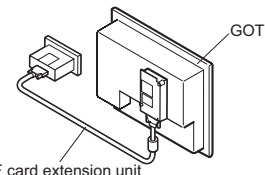
1. Overview

This User's Manual describes the GT15 CF card extension unit (hereinafter abbreviated as CF card extension unit). For GOT to which the units can be installed and usable CF cards, refer to GT15 User's Manual.

When using an additional drive, the CF card extension unit can be used as the B drive of the GOT.

The extension units used as the B drive of the GOT are a CF card unit and a CF card extension unit. The CF card unit and the CF card extension unit cannot be used at once.

When using the CF card extension unit, the control panel side installation unit on the control panel has the CF card interface. Therefore, when inserting or ejecting the CF card, there is no need to open the control panel's door.



When using the CF card extension unit, set the Communication Settings. For setting, refer to GT15 User's Manual.

2. Specifications

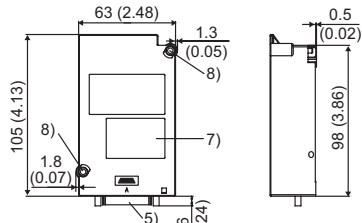
The following table shows the performance specifications of the CF card extension unit. The general specifications of the CF card extension unit are the same as those of the GOT. For the general specifications of the GOT, refer to GT15 User's Manual.

Item	Specifications	
Internal current consumption (5VDC)	0.15A (Total current of GT15-CFEX and GT15-CFEXIF)	
Protective structure	Outside the enclosure CF card cover closed	IP67 or IP65 *
	CF card cover opened	IP2X
	Inside the enclosure	IP2X
Weight	0.47kg (1.03lb)	

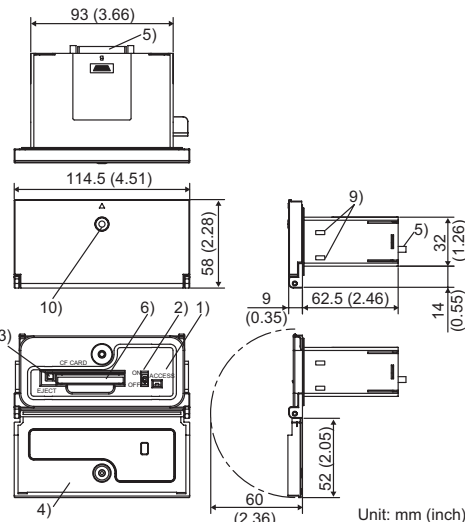
* When changing the dustproof rubber to the CF card cover fixing screw, the specification for the protective structure is IP67.

3. Part Names and External Dimensions

(1) GOT side installation unit



(2) Control panel side installation unit

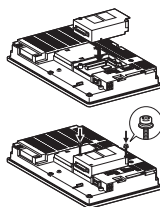


No.	Name	Description
1)	CF card access LED	LED lamp lit when the CF card is accessed
2)	CF card access switch	Switch for disabling the access to the CF card ON: Access to the CF card enabled OFF: Access to the CF card disabled
3)	Eject button	Button for removing the CF card
4)	CF card cover	Cover opening/closing at CF card installation/removal
5)	Cable connector	Cable connector for connecting the GOT side installation unit and the control panel side installation unit
6)	CF card connector	Connector for installing the CF card
7)	Rating plate	-
8)	Fixing screw for GOT side installation unit	Fixing screw fixed with a front extension unit or the GOT
9)	Hole for unit installation fitting	Hole for the fitting installing the unit to the control panel
10)	Dustproof rubber	Rubber for blocking the CF card cover fixing screw hole

4. Installation Procedure

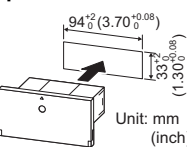
4.1 Installing on GOT

- Power off the GOT.
- Remove one of extension unit cover of the GOT and fit the GOT side installation unit in the GOT case.
- Fix the GOT side installation unit by tightening its fixing screws (2 places) with a tightening torque of 0.36 to 0.48N·m.

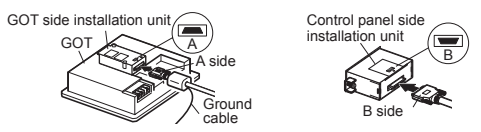


4.2 Installing on the control panel

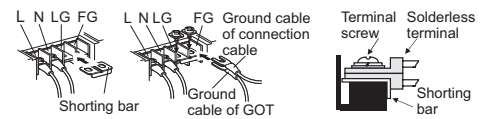
- Insert the control panel side installation unit into the installation hole of the control panel. For the installation hole, refer to the figure right.
- Fix the GOT side installation unit by tightening its fixing screws (2 places) with a tightening torque of 0.36 to 0.48N·m.



- Insert the connector with the ground cable into the GOT side installation unit, and insert the connector without the ground cable into the control panel side installation unit. (For GT15□, before connecting the connection cable to the GOT side installation unit, connect the ground cable of the connection cable to the GOT's terminal block. Because the GOT's terminal block overlaps with the connection cable, the ground cable cannot be connected to the GOT's terminal block.) After inserting the connectors, tighten the connection cable fixing screws.



- Install the shorting bar to the LG and FG terminals of the GOT's power. Connect the ground cable of the connection cable with the GOT's ground cable to the FG terminal of the GOT's power. For GT15□, connect the ground cable of the connection cable to the FG terminal of the GOT's power, and connect the GOT's ground cable to the protective ground terminal. (Shorting is not needed.) When connecting the ground cables, each flat side of the two solderless terminals must be faced. For the details of wiring, refer to GT15 User's Manual.



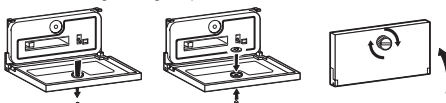
For the ground cable of the connection cable, use the following solderless terminals.

Applicable solderless terminal RAV1.25-3, V1.25-B3A, FV1.25-B3A

4.3 Installing CF Card Cover Fixing Screw

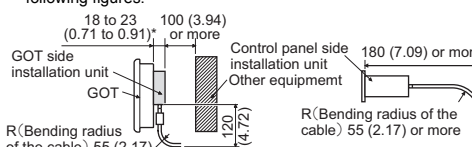
The protective structure of the outside the enclosure for the control panel side installation unit is IP65 in shipping. For IP67 of the protective structure, follow the procedure below.

- Open the CF card cover, and remove the dustproof rubber in the direction of the arrow.
- Insert the CF card cover fixing screw into the hole of the CF card cover, and install the washer in the direction of the arrows.
- Close the CF card cover, and tighten the CF card cover fixing screw with a tightening torque of 0.11 to 0.48N·m.



4.4 Installation and Removal Precautions

- When installing the CF card extension unit, make space of the dimensions shown in the following figures inside the control panel. The bending radius of the cable must be the value shown in the following figures.



- The dimension differs depending on the GOT. When installing the control panel side installation unit on the control panel, install the unit out of the way for the equipment inside the control panel, including the cables of extension units and the CF card interface of the GOT. Keep the distance of 25mm (0.98 inch) or more between the control panel side installation unit and the GOT. For the installation location, refer to GT15 User's Manual.
- Extension units cannot be installed on the GOT side installation unit. When installing other extension units, install the GOT side installation unit at the last.
- When removing the GOT side installation unit, tilt ΔPULL of the unit and remove the unit so as not to break the connector.

5. CF Card Installation/Removal Procedure

5.1 Installation

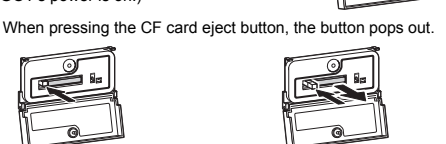
- Open the CF card cover and turn off the CF card access switch of the unit.
- Insert the CF card into the CF card connector with the front side facing up.



- Turn on the CF card access switch.

5.2 Removal

- Open the CF card cover. Turn off the CF card access switch and check that the CF card access LED turns off. (The CF card can be removed when the CF card access LED turns off even though the GOT's power is on.)
- When pressing the CF card eject button, the button pops out.



WARRANTY

Mitsubishi will not be held liable for damage caused by factors found not to be the cause of Mitsubishi; machine damage or lost profits caused by faults in the Mitsubishi products; damage, secondary damage, accident compensation caused by special factors unpredictable by Mitsubishi; damages to products other than Mitsubishi products; and to other duties.

FOR SAFE USE

- This product has been manufactured as a general-purpose part for general industries, and has not been designed or manufactured to be incorporated in a device or system used in purposes related to human life.
- Before using the product for special purposes such as nuclear power, electric power, aerospace, medicine or passenger movement vehicles, consult with Mitsubishi.
- This product has been manufactured under strict quality control. However, when installing the product where major accidents or losses could occur if the product fails, install appropriate backup or failsafe functions in the system.

Country/Region	Sales office/Tel
U.S.A	Mitsubishi Electric Automation Inc. 500 Corporate Woods Parkway Vernon Hills, IL 60061, U.S.A. Tel: +1-847-478-2100
Brazil	MELCO-TEC Rep. Com.e Assessoria Tecnica Ltda. Rua Correia Dias, 184, Edificio Paraiso Trade Center-8 andar Paraiso, Sao Paulo, SP Brazil Tel: +55-11-5908-8331
Germany	Mitsubishi Electric Europe B.V. German Branch Gothaer Strasse 8 D-40880 Ratingen, GERMANY Tel: +49-2102-486-0
U.K	Mitsubishi Electric Europe B.V. UK Branch Travellers Lane, Hatfield, Hertfordshire, AL10 8XB, U.K. Tel: +44-1707-276100
Italy	Mitsubishi Electric Europe B.V. Italian Branch Centro Dir. Colibroni, Pal. Persico-Ing. Z. Via Paracelso 12, I-20041 Agrate Brianza, Milano, Italy Tel: +39-039-60531
Spain	Mitsubishi Electric Europe B.V. Spanish Branch Carretera de Rubi 76-80 E-08190 Sant Cugat del Valles, Barcelona, Spain Tel: +34-93-565-3131
France	Mitsubishi Electric Europe B.V. French Branch 25, Boulevard des Bouvets, F-92741 Nanterre Cedex, France Tel: +33-1-5508-5568
South Africa	Circuit Breaker Industries Ltd. Private Bag 2016, ZA-1600 Isando, South Africa Tel: +27-11-928-2000
Hong Kong	Mitsubishi Electric Automation (Hong Kong) Ltd. 10th Floor, Manulife Tower, 169 Electric Road, North Point, Hong Kong Tel: +852-2887-8870
China	Mitsubishi Electric Automation (Shanghai) Ltd. 4/F Zhi Fu Plaza, No.80 Xin Chang Road, Shanghai 200003, China Tel: +86-21-6120-0808
Taiwan	Setuwo Enterprise Co., Ltd. 6F No.105 Wu-Kung 3rd Rd., Wu-Ku Hsiang, Taipei Hsine, Taiwan Tel: +886-2-2299-2499
Korea	Mitsubishi Electric Automation Korea Co., Ltd. 1480-6, Gayang-dong, Gangseo-ku Seoul 157-200, Korea Tel: +82-2-3660-9552
Singapore	Mitsubishi Electric Asia Pte. Ltd. 307 Alexandra Road #05-01/02, Mitsubishi Electric Building, Singapore 159943 Tel: +65-6470-2490
Thailand	Mitsubishi Electric Automation (Thailand) Co., Ltd. Bang-Chan Industrial Estate No.111 Moo 4, Serithai Rd, T.Kannayao, A.Kannayao, Bangkok 10230 Thailand Tel: +66-2-517-1326
Indonesia	P.T. Autotekindo Sumber BlokMurni Muara Karang Selatan, Blok A/Ultra No.1 Kav. No.11 Kawasan Industri Pergudangan Jakarta - Utara 14440, P.O.Box 5045 Jakarta, 11050 Indonesia Tel: +62-21-66030833
India	Messung Systems Pvt. Ltd. Electronic Sadan NO.III Unit No15, M.I.D.C. Bhosari, Pune-411026, India Tel: +91-20-2712-3130
Australia	Mitsubishi Electric Australia Pty. Ltd. 348 Victoria Road, Rydalmere, N.S.W 2116, Australia Tel: +61-2-9684-7777

MITSUBISHI ELECTRIC CORPORATION
HEAD OFFICE: TOKYO BUILDING, 2-7-3 MARUNOUCHI, CHIYODA-KU, TOKYO 100-8310, JAPAN
NAGOYA WORKS: -1-14, YADA-MINAMI 5-CHOME, HIGASHI-KU, NAGOYA, JAPAN
When exported from Japan, this manual does not require application to the Ministry of Economy, Trade and Industry for service transaction permission.
Specifications subject to change without notice.
Printed in Japan on recycled paper.