

MELSOFT

Human Machine Interface

Operating Manual
(Startup Manual)

**GT Works Version5/
GT Designer Version5
SW5D5C-GTWORKS-E
W5D5C-GOTR-PACKE(V)**

Precautions for using this software (important)

1. Memory of the personal computer used

Processing may be terminated by Windows® on some personal computer models having main memory of not more than 32M bytes. Therefore, use them after increasing the main memory to 32M bytes or more.

2. Free space on the hard disk

While this software is running, free space of at least 50M byte is required on the hard disk.

Since free space of 50M byte is required by Windows® as the swap area, Windows® forcibly terminate the program if that free space is used up while the drawing software is running. Produce a sufficient amount of free space on the hard disk before using the drawing software. If you have to use the drawing software with an amount of free space that is barely above the requirement, save project data as often as possible.

When GT Simulator is used with GX Developer or GX Simulator, free space is required separately.

Refer to the GX Developer or GX Simulator Operating Manual for the free space required for use of GX Developer or GX Simulator.

3. Using a spin box in a dialog box

- Do not enter into a spin box a numerical value with a number of digits that drastically exceeds the maximum number of digits that can be entered into the spin box. Entering a number of digits that drastically exceeds the maximum allowable number of digits may cause a forcible termination of the program.

- On the [Action] tab selectable from the [Touch key] dialog box, the spin box provided for selecting a key code does not display the key codes in the order of valid key codes when it displays the key codes for the special keys used by such functions as the alarm history display, data list display, and alarm list (user alarm) display. When you keep on clicking the button, therefore, the key codes will not be scrolled forward or backward in the order of the valid key codes. (Clicking the button when the spin box displays "FFEF", for example, will not display "FFB0" as the valid key code that comes next in the order.)

To specify such a key code for a special key associated with an object, use the keyboard to type the key code into the spin box instead of making a selection from the spin box.

4. Operation on a table in a dialog box

To select a line on a table when specifying a object display range, for example, click on any part of the line except the number display column. Clicking on the number display column on a line does not select the line. If you clicked on the number display column on a line, that line is displayed in reverse video; click on the number display column again to resume the display in normal video.

5. Instructions for displaying any line other than a continuous line (such as a dotted line) in boldface type

When any line other than a continuous line is drawn in boldface type, the personal computer screen may not display the line type properly. However, it is displayed properly on the GOT and there are no problems in data.

6. Measures against the year 2000 (Y2K) problem

The GOT reads and displays the clock information from the PLC. When the GOT is connected to the Mitsubishi PLC/Mitsubishi motion controller or is used with the A9GT-RS2T, continuous operation or restart of the GOT will present no problem since the PLC/motion controller/A9GT-RS2T itself will perform 1999-to-2000 roll-over operation and leap compensation properly. (No measures required) When connected to a third party PLC, however, the GOT reads and displays the clock data from the third party PLC. Therefore, contact the corresponding company for the clock data when the GOT is connected to the third party PLC.

7. About the messages displayed at start

"Internal error: null pointer access"

If the above error has appeared, change the setting in the following procedure.

1) Click the "Start" button, point to the [Settings]-[Control Panel] menu, and click.

2) Double-click the "Regional Settings" icon.

3) As the [Regional Settings Property] dialog box appears, choose "English". If the above message appears with the setting of "English", choose the language other than English and restart the personal computer.

After a start, choose "English" again and restart the personal computer.

"Abnormal termination"

If the above error has appeared, check whether the hard disk has the free capacity of 50MB or more.

REVISIONS

* The manual number is given on the bottom left of the back cover.

Print Date	* Manual Number	Revision
Aug., 2000	IB (NA)-0800143-A	First edition
Oct., 2000	IB (NA)-0800143-B	Partial corrections Section 2.1, Section 2.2, Section 3.1, Section 3.2.1, Section 3.2.2, Section 3.2.3, Chapter 4 Partial additions Chapter 1, Section 1.1
Nov., 2000	IB (NA)-0800143-C	Partial corrections Section 2.2
Feb., 2001	IB (NA)-0800143-D	Partial corrections Section 3.1, Section 3.2.2, Section 3.4.1, Section 3.4.2, Section 3.4.3, Chapter 4 Partial additions Section 1.1, Section 2.2, Section 3.2.1, Section 3.2.3, Section 3.3
Jun., 2001	IB (NA)-0800143-E	Partial corrections Section 2.2 Partial additions Section 1.1, Section 3.2.1, Section 3.4.1
Aug., 2001	IB (NA)-0800143-F	Partial corrections Section 3.1 Partial additions Section 2.2, Section 3.2
May., 2002	IB (NA)-0800143-G	Partial additions Section 3.12

Japanese Manual Version IB-0800142-G

This manual confers no industrial property rights or any rights of any other kind, nor does it confer any patent licenses. Mitsubishi Electric Corporation cannot be held responsible for any problems involving industrial property rights which may occur as a result of using the contents noted in this manual.

© 2000 MITSUBISHI ELECTRIC CORPORATION

INTRODUCTION

Thank you for choosing the Mitsubishi Graphic Operation Terminal.
Before using the equipment, please read this manual carefully to use the equipment to its optimum.



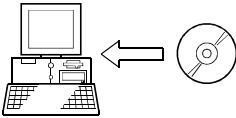
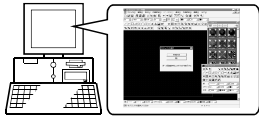
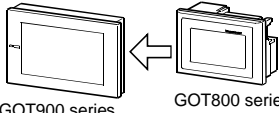

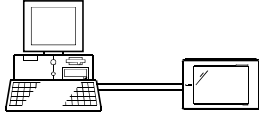
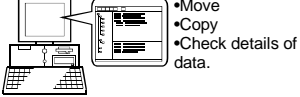
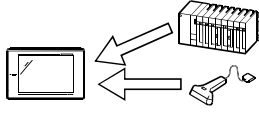
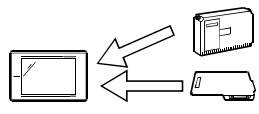
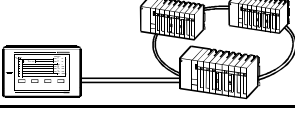
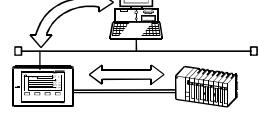

CONTENTS

About manuals	A- 4
Abbreviations and generic terms in this manual	A- 7
Product makeup	A- 8
1. OVERVIEW	1- 1 to 1- 2
1.1 Makeups of Software Packages	1- 1
2. SYSTEM CONFIGURATION	2- 1 to 2- 3
2.1 System configuration	2 - 1
2.2 Operation environment	2 - 2
3 Installation and uninstallation	3 - 1 to 3 - 17
3.1 Starting Setup	3 - 1
3.2 Installing each software	3 - 2
3.2.1 Installing the software for GOT900 series	3 - 2
3.2.2 Installing SW3NIW-GOT800PSET	3 - 8
3.2.3 Installing Acrobat Reader	3 -10
3.3 Uninstall each software	3 -11
3.3.1 Uninstalling the software for GOT900 series	3 -11
3.3.2 Uninstalling SW3NIW-GOT800PSET	3 -12
3.3.3 Uninstalling Acrobat Reader	3 -13
3.4 Start-up of each software package	3 -14
3.4.1 Starting the software for GOT900 series	3 -14
3.4.2 Starting SW3NIW-GOT800PSET	3 -16
3.4.3 Starting Acrobat Reader	3 -17
4 How to use the online manuals	4 - 1 to 4 - 2

About Manuals

How to Select Manuals

The manuals and helps of the GOT are classified by purposes.
Refer to the following table, and read the required manuals to understand the handling, operations and functions of the GOT and software.

Purpose	Refer To	
	GOT-A900 series	GOT-F900 series
  <ul style="list-style-type: none"> To use the GOT for the first time. To learn about the GOT. To draw actually using GT Designer. 	Refer to the related manuals (1).	
 <ul style="list-style-type: none"> To install the corresponding software of the GOT into a personal computer. To start the corresponding software. To know how to use the online manuals. 	Refer to this manual.	
 <ul style="list-style-type: none"> To create screens on GT Designer. To know how to connect the personal computer and GOT. To know various monitor functions. To confirm how to set various object functions. 	Refer to the related manuals (2). Refer to GT Designer help functions.	
 <ul style="list-style-type: none"> To convert the monitor screen data created with the GOT800 series or Digital package into data for GOT900. 	Refer to GT Converter help functions.	
 <ul style="list-style-type: none"> To simulate a created screen on the personal computer to see how it operates on the GOT. 	Refer to the related manuals (3).	—
 <ul style="list-style-type: none"> To debug the monitor screen data with the personal computer connected to the GOT to replace the PLC CPU. 	Refer to GT Debugger help functions.	
 <ul style="list-style-type: none"> •Move •Copy •Check details of data. <ul style="list-style-type: none"> To manage the created monitor screen data (project data). 	Refer to GT Manager help functions.	
 <ul style="list-style-type: none"> To confirm connection forms available for the GOT. To confirm the system configuration per connection form. To confirm how to set the modules used. To confirm the wiring diagrams of the connection cables used. 	Refer to the related manuals (4).	Refer to the related manuals (9).
 <ul style="list-style-type: none"> To confirm the GOT specifications, system configuration, constituent devices, part names, installation/wiring methods, maintenance/inspection methods and error codes. To fit various units to the GOT. 	Refer to the related manuals (5).	Refer to the related manuals (10).
 <ul style="list-style-type: none"> To use the GOT functions. To confirm the connected CPU/special function module/network status using the maintenance function of the GOT. 	Refer to the related manuals (6).	Refer to the related manuals (11).
 <ul style="list-style-type: none"> To use the Gateway functions. 	Refer to the related manuals (7).	—
 <ul style="list-style-type: none"> To use the personal computer as SoftGOT. 	Refer to the related manuals (8).	—

Related Manuals

The following manuals related to this product are available. Obtain the manuals as required the according to this table.

	Manual name	Manual number (Model code)
(1)	GOT900 Series Operating Manual (Introductory Manual) For those who use the GOT for the first time, describes the way to create a monitor screen on GT Designer, transfer monitor data to the GOT, and display it on the screen. (Available as option)	SH-080116 (13JU07)
(2)	GT Works Version5/GT Designer Version5 Reference Manual Deals with the system configuration of GT Works Version 5/GT Designer Version 5, the screen makeup of the GT Designer, the general description of various monitoring functions, the procedure for displaying the monitor screen on the GOT, and how to use the help function. (Available as option)	SH-080117 (13JF95)
(3)	GT Simulator Verson5 Operating Manual Explains the system configuration, screen makeup and using methods of GT Simulator. (Available as option)	SH-080120 (13JU09)
(4)	GOT-A900 Series User's Manual (GT Works Version5/GT Designer Version5 compatible Connection System Manual) Gives the specifications, system configuration, setting method and connection diagram of each connection form available for the GOT-A900 series. (Available as option)	SH-080119 (13JR20)
(5)	A985GOT/A975GOT/A970GOT/A960GOT User's Manual Explains the specifications, general system configuration, component devices, part names, option unit loading methods, installation and wiring methods, maintenance and inspection methods, and error codes of A985GOT/A975GOT/A970GOT/A960GOT unit. (Available as option)	SH-4005 (13JL70)
	A950GOT/A951GOT/A953GOT/A956GOT User's Manual Explains the specifications, general system configuration, component devices, part names, option unit loading methods, installation and wiring methods, maintenance and inspection methods, and error codes of A950GOT/A951GOT/A953GOT/A956GOT unit. (Available as option)	SH-080018 (13JL92)
(6)	GOT-A900 Series Operating Manual (GT Works Version5/GT Designer Version5 compatible Extended • Option Functions Manual) Provides the specifications of the utility, system monitoring, ladder monitoring, special function unit monitoring, network monitoring functions, list editor functions, motion monitor functions and servo amplifier monitoring functions available for the GOT-A900 series and how to operate the dedicated monitor screen. (Available as option)	SH-080118 (13JU08)
(7)	GOT-A900 Series Operating Manual (GT Works Version 5/GT Designer Version 5 compatible Gateway Functions Manual) Explains the specifications, system configuration, setting methods and others of the gateway functions that can be performed on the GOT-A900 series. (Available as option)	SH-080254 (13JU29)
(8)	GT SoftGOT Verson5 Operating Manual Explains the system configuration, screen makeup and using methods of GT SoftGOT. (Available as option)	SH-080156 (13JU12)
(9)	GOT-F900 Hardware Manual [Common Connection] Explains the specifications, system configuration and connection diagram of each connection form available for the GOT-F900 series. Hardware manual common to the ET series and handy GOT. (Sent separately)	JY992D94801
(10)	F920GOT-BBD5-K-E (with keypad) Installation Manual Explains the specifications, part names, and installation and power supply wiring methods of the F920GOT-K-E. (Packed with the F920GOT (with keypad))	JY997D02201
	F930GOT Installation Manual Explains the specifications, part names, and installation and power supply wiring methods of the F930GOT. (Packed with the F930GOT)	JY992D95701
	F930GOT-BBD-K-E (with keypad) Installation Manual Explains the specifications, part names, and installation and power supply wiring methods of the F930GOT-K-E. (Packed with the F930GOT (with keypad))	JY997D02501
	F940GOT Installation Manual Explains the specifications, part names, and installation and power supply wiring methods of the F940GOT. (Packed with the F940GOT)	JY992D94201
	F940WGOT Installation Manual Explains the specifications, part names, and installation and power supply wiring methods of the F940WGOT. (Packed with the F940WGOT)	JY992D93901

Manual name		Manual number (Model code)
(10)	F940 Handy GOT Hardware Manual Explains the specifications, system configuration, part names and installation method of the handy GOT. (Packed with the handy GOT)	JY992D86901
	F940GOT Handy Series (F94*GOT-*BD-RH-E) Hardware Manual Explains the specifications, system configuration, part names, and installation method of the Handy GOT. (Packed with the Handy GOT RH Type)	JY992D99901
(11)	GOT-F900 Operating Manual Explains the drawing specifications, utility function/HPP mode/special function unit monitoring function specifications, and dedicated monitor screen operation methods available for the GOT-F900 series. Operating manual common to the ET series and handy GOT. (Sent separately)	JY992D94701

Abbreviations and generic terms in this manual

Abbreviations and generic terms used in this manual are described as follows:

Abbreviations and generic terms		Description
GOT	A985GOT-V	Generic term of A985GOT-TBA-V and A985GOT-TBD-V
	A985GOT	Generic term of A985GOT-TBA, A985GOT-TBD and A985GOT-TBA-EU
	A975GOT	Generic term of A975GOT-TBA-B, A975GOT-TBD-B, A975GOT-TBA, A975GOT-TBD and A975GOT-TBA-EU
	A970GOT	Generic term of A970GOT-TBA-B, A970GOT-TBD-B, A970GOT-TBA, A970GOT-TBD, A970GOT-SBA, A970GOT-SBD, A970GOT-LBA, A970GOT-LBD, A970GOT-TBA-EU and A970GOT-SBA-EU
	A97*GOT	Generic term of A975GOT and A970GOT
	A960GOT	Generic term of A960GOT-EBA, A960GOT-EBD and A960GOT-EBA-EU
	A956WGOT	Abbreviation of A956WGOT-TBD
	A956GOT	Generic term of A956GOT-TBD, A956GOT-SBD, A956GOT-LBD, A956GOT-TBD-M3, A956GOT-SBD-M3 and A956GOT-LBD-M3
	A953GOT	Generic term of A953GOT-TBD, A953GOT-SBD, A953GOT-LBD, A953GOT-TBD-M3, A953GOT-SBD-M3 and A953GOT-LBD-M3
	A951GOT	Generic term of A951GOT-TBD, A951GOT-SBD, A951GOT-LBD, A951GOT-TBD-M3, A951GOT-SBD-M3 and A951GOT-LBD-M3
	A951GOT-Q	Generic term of A951GOT-QTBD, A951GOT-QSBD, A951GOT-QLBD, A951GOT-QTBD-M3, A951GOT-QSBD-M3 and A951GOT-QLBD-M3
	A950GOT	Generic term of A950GOT-TBD, A950GOT-SBD, A950GOT-LBD, A950GOT-TBD-M3, A950GOT-SBD-M3 and A950GOT-LBD-M3
	A950 handy GOT	Generic term of A953GOT-SBD-M3-H and A953GOT-LBD-M3-H
	A95*GOT	Generic term of A956GOT, A953GOT, A951GOT, A951GOT-Q, A950GOT and A950 handy GOT
	F940GOT	Generic term of F940GOT-SWD-E, F940GOT-LWD-E, ET-940BH(-L) and ET-940PH(-L)
	F930GOT	Generic term of F930GOT-BWD-E and F930GOT-BBD-K-E
	F920GOT	Abbreviation of F920GOT-BBD5-K-E
	F940 handy GOT	Generic term of F940GOT-SBD-H, F940GOT-LBD-H, F940GOT-SBD-RH, F940GOT-LBD-RH, F943GOT-SBD-H, F943GOT-LBH-H, F943GOT-SBD-RH and F943GOT-LBH-RH
	F940WGOT	Abbreviation of F940WGOT-TWD
	GOT-A900 series	Generic term of A985GOT, A975GOT, A970GOT, A960GOT and A95*GOT
GOT-F900 series	Generic term of F940GOT, F930GOT, F920GOT, F940 handy GOT and F940WGOT	
Software	GT Works Version5	Abbreviation of SW5D5C-GTWORKS-E software package
	GT Designer Version5	Generic term of SW5D5C-GOTR-PACKEV software package and SW5D5C-GOTR-PACKEV software package
	GT Designer	Abbreviation of image creation software GT Designer for GOT900
	GT Simulator	Abbreviation of GT Simulator screen simulator GOT900
	GT Converter	Abbreviation of data conversion software GT Converter for GOT900
	GT Debugger	Abbreviation of debugging software GT Debugger
	GT Manager	Abbreviation of GT Manager data editing software for GOT900
	GT SoftGOT	Abbreviation of GT SoftGOT monitoring software.
	GX Developer	Generic term of SW5D5C-GPPW-E/SW5D5F-GPPW-E software packages
GX Simulator	Generic term of SW5D5C-LLT-E ladder logic test tool function software packages (SW5D5C-LLT-E or later)	
Others	License key	Abbreviation of A9GTSOFT-LKEY-P license key (for DOS/V personal computer)
	License key FD	Abbreviation of SW5D5F-SGLKEY-E (license registration package for PC CPU module)
	DOS/V personal computer	IBM PC/AT [®] or its compatible DOS/V personal computer
	PC CPU module	MELSEC-Q series compatible PC CPU module (CONTEC CO.LTD.make)
	Personal Computer	Generic term of IBM PC/AT [®] and compatible DOS/V personal computer

Product makeup

GT Works Version5 and GT Designer Version5 are made up of the following products:

Product Name	Description	Quantity
GT Works Version5	SW5D5C-GTWORKS-E software package (CD-ROM)	1
	Operating Manual (Startup Manual)	1
	Software using agreement	1
	Software registration sheet	1
GT Designer Version5	SW5D5C-GOTR-PACKE (V) software package (CD-ROM)	1
	Operating Manual (Startup Manual)	1
	Software using agreement	1
	Software registration sheet	1

Chapter1 Overview

This manual describes the system configurations, installation procedures, online manual using methods and other information of the following products.

- SW5D5C-GTWORKS-E Software Package
- SW5D5C-GOTR-PACKE Software Package
- SW5D5C-GOTR-PACKEV Software Package*

*Update-only product which may be used only by those who use the old version of the product.

1.1 Makeups of Software Packages

SW5D5C-GTWORKS-E (hereafter abbreviated to GT Works Version 5) and SW5D5C-GOTR-PACKE/SW5D5C-GOTR-PACKEV (hereafter abbreviated to GT Designer Version 5) are made up of the following software programs and data.

(1) Software list

Software name		Function
Software for GOT900	GT Designer	This software creates screens for the GOT900.
	GT SoftGOT*1	This software lets the personal computer be used as GOT. It is necessary to install the license key or the license key FD in order to use. If either key is required, contact your nearest Mitsubishi branch office or dealer.
	GT Simulator*1	This software can be connected with GX Simulator or PLC CPU to simulate GOT operation on a personal computer.
	GT Debugger	By connecting a personal computer to the GOT unit instead of the PLC CPU, this software allows you to debug the monitor screen data downloaded to the GOT.
	GT Converter	This software converts the monitor screen data for GOT800 series or the Digital package data into the monitor screen data for GOT900 so that they may be used with the drawing software for GOT900 series.
	GT Manager	This software controls drawing data by listing the drawing data created with the GT Designer or by performing editing operations such as drawing data copy/move/delete.
Software for GOT800	Drawing software (SW3NIW-GOT800PSET)	Drawing software for the GOT800 series. Used to convert the GOT data of earlier than GOT800 into the GOT data for GOT800 series. For converting operation, refer to the SW3NIW-A8GOTP Operating Manual (Monitor Screen Creation Manual).
PDF browsing software	Adobe Acrobat Reader 4.05	Adobe Acrobat Reader 4.05 (hereafter referred to as "Acrobat Reader") is the product of Adobe Systems, Inc. Acrobat Reader allows you to browse PDF data. Since the online manuals are available as PDF data, use this software to browse them.

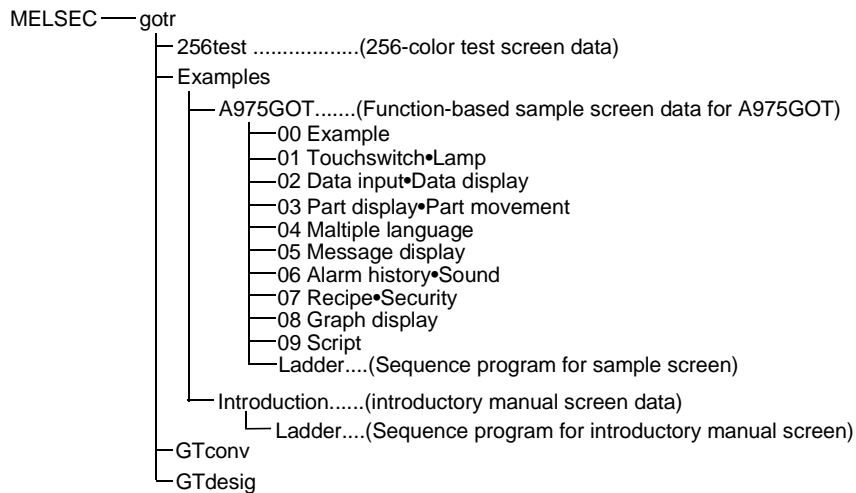
*1 Packed with GT Works Version 5 only.

(2) List of other accessory data

GT Works Version 5 and GT Designer Version 5 contain the following data in addition to the software given in (1). Use them as required.

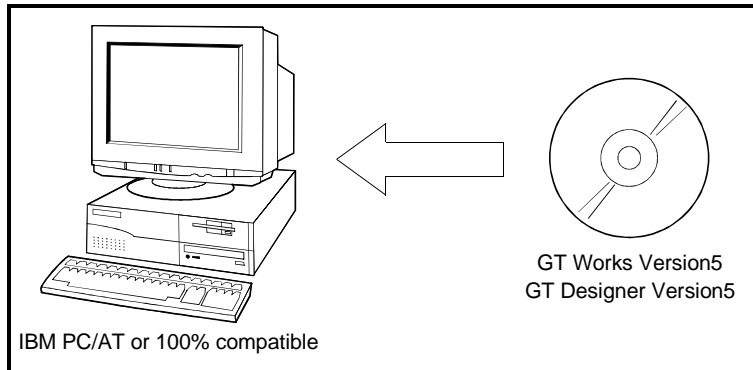
Data name	Using method	Installing method
Online manuals	Online manuals related to the GOT900/GOT800 series. Contained as PDF data.	Not installed.
Sample screen data	Sample screen data for A975GOT. To actually operate the sample screen, write the sequence program stored in the "Ladder" folder to the PLC CPU using GX Developer or the like.	Installed when the GT Designer is installed.*1
Introductory Manual screen data	Screen data described in the GOT900 Series Operating Manual (Introductory Manual). To actually operate the sample screen, write the sequence program stored in the "Ladder" folder to the PLC CPU using GX Developer or the like.	
256-color test screen data	Screen data where 256 color patterns have been set. You can confirm the display contents of 256 colors.	

*1 After the software is installed, the data are stored into the following folders, respectively.



Chapter2 System configuration

2.1 System configuration



2.2 Operation environment

(1) When GT Designer is installed

The following personal computer operating environment assumes that GT Designer is installed.

Item	Details
Body	Pentium® 133 MHz or better (Pentium II® 266MHz or more recommended) Personal computer allowing operation of Microsoft® Windows® 95 operating system, Microsoft® Windows® 98 operating system, Microsoft® Windows® Millennium Edition operating system, Microsoft® WindowsNT® Workstation4.0 operating system, Microsoft® Windows® 2000 Professional operating system
Disk drive	CD-ROM drive is mandatory.
Main memory	32 Mbyte (64 Mbyte or more is recommended.)
Hard disk space	At the time of "Typical" installation At the time of installation: 80M bytes or more At the time of execution: 50M bytes or more
CRT	Compatible with Windows® 95, Windows® 98, Windows® Me, WindowsNT® Workstation4.0, Windows® 2000
Display color	256 color or more
Resolution	Resolution of 800 x 600 dots or more
Mouse, keyboard, printer, CD-ROM drive	Compatible with Windows® 95, Windows® 98, Windows® Me, WindowsNT® Workstation4.0, Windows® 2000

(2) When GT Simulator is installed

The following personal computer operating environment assumes that GT Simulator is installed.

Item	Details
Body	Pentium® 133 MHz or better (Pentium II® 266MHz or more recommended) Personal computer allowing operation of Windows®95*2, Windows® 98, Windows® Me, WindowsNT® Workstation4.0 *3, Windows® 2000
Disk drive	CD-ROM drive is mandatory.
Main memory	GT Simulator Only: 32M byte or more (96M byte or more is recommended) GT Simulator + GX Developer + GX Simulator: 64M byte or more (96M byte or more is recommended)
Hard disk space	At the time of installation: 200M bytes or more At the time of execution: 50M bytes or more
CRT	Compatible with Microsoft Windows® 95, Windows® 98, Windows® Me, WindowsNT® Workstation4.0 *3, Windows® 2000
Display color	256 color or more
Resolution	Resolution of 800 x 600 dots or more
Necessary software	Required SW4D5C-GOTR-PACKE Version A or later*4 When GX Simulator is used For QCPU (A mode), ACPU, Motion controller CPU simulation : SW5D5C-LLT-E Version A or later For QCPU (Q mode), QnACPU, FXCPU simulation : SW5D5C-LLT-E Version E or later
Mouse, keyboard, printer, CD-ROM drive	Compatible with Microsoft Windows® 95, Windows® 98, Windows® Me, WindowsNT® Workstation4.0 *3, Windows® 2000

*1 When this software is used with GX Developer or GX Simulator, free space is required separately.

Refer to the GX Developer or GX Simulator Operating Manual for the free space required for use of GX Developer or GX Simulator.

*2 When using GT Simulator, use a computer where Windows® 95 of version B or later or Internet Explorer 3 or later is installed.

*3 When using GT Simulator, use a computer where WindowsNT® Workstation4.0 of Service Pack 3 or later is installed.

*4 Use GT Designer whose version is the same as or earlier than the version of GT Simulator. (Example: Monitor data created on GT Designer of SW5 version A or later cannot be simulated on GT Simulator of SW4 version F or earlier.)

(3) When GT SoftGOT is installed

The following personal computer operating environment assumes that GT SoftGOT is installed.

Item		Description
Body	DOS/V personal computer	Pentium® 200MHz or higher (Pentium II® 300MHz or higher recommended) Personal computer allowing operation of Windows® 98, Windows® Me, WindowsNT® Workstation 4.0 *1, Windows® 2000
	PC CPU module	Contec's MELSEC-Q series-compatible PC CPU module
Disk drive		CD-ROM drive is mandatory. 3.5 inch (1.44MB) floppy disk drive required *2
Main memory		64M bytes or more (96M bytes or more recommended)
Hard disk space		At the time of installation : 150M bytes or more At the time of operation : 50M bytes or more
CRT		Compatible with Windows® 98, Windows® Me, WindowsNT® Workstation 4.0. , Windows® 2000
Display color		256 colors or more
Resolution		Resolution of 800x600 dots or more
Necessary software		SW5D5C-GOTR-PAKE Version D or later.
License key		A9GTSOFT-LKEY-P (license key for DOS/V personal computer)
/License key FD*3		SW5D5F-SGLKEY-E (license registration package for PC CPU module)
Mouse, keyboard, printer, CD-ROM drive		Compatible with Windows® 98, Windows® Me, WindowsNT® Workstation 4.0, Windows® 2000

*1 When using GT SoftGOT, use a computer where WindowsNT® Workstation 4.0 of Service Pack 3 or later is installed.

*2 Needed only when the PC CPU module is used (used to register/cancel the license with the license key FD)

*3 A9GTSOFT-LKEY-P is needed for use of the DOS/V personal computer, or SW5D5F-SGLKEY-E is needed for use of the PC CPU module.

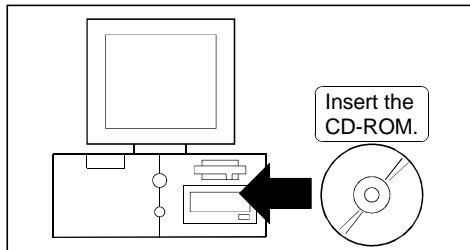
POINT
Depending on the language of your Operating System, this software may not start. In such a case, start this software after setting the Regional Settings within Control Panel of Windows® to "English".

Chapter 3 Installation and uninstallation

This chapter explains installation and uninstallation of the software programs contained in GT Works Version5, GT Designer Version5.

3.1 Starting Setup

Start Setup in the following procedure.



- 1) Insert the CD-ROM into the CD-ROM drive of the personal computer where any of Windows® is running.
After a while, Setup starts.



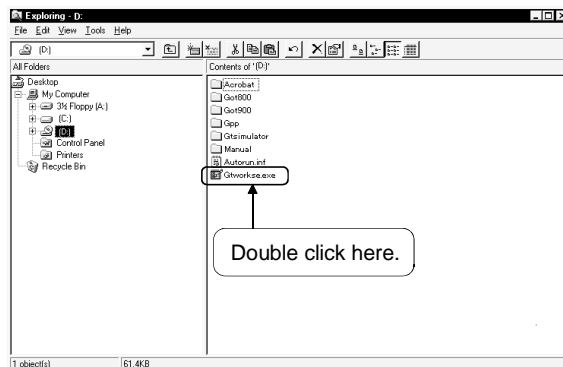
- 2) As Setup of GT Works Version 5 or GT Designer Version 5 starts, install each software and browse the PDF manual.

When one process ends, this Setup appears. You can then start another process.
When you want to terminate Setup, click .

POINT

If Setup does not start automatically after you have inserted the GT Works Version 5 or GT Designer Version 5 into the CD-ROM drive, start it in the following method.

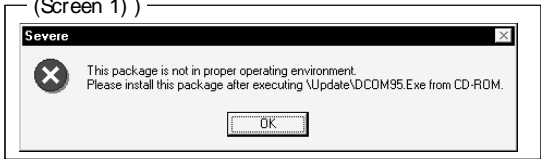
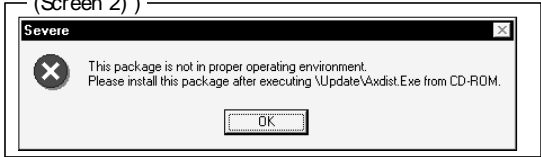
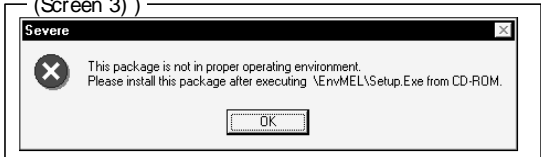
- Using Device Manager of Windows®, make setting to automatically start the CD-ROM drive.
- Start Explorer and double-click "GTWorksE.exe" or "GTDesignerE.exe" of the CD-ROM drive.



3.2 Installing each software

POINT
<ul style="list-style-type: none"> • Before starting installation, close all other applications running on Windows®. • When using Windows® NT Workstation 4.0 or Windows® 2000, log on as a user having the administrator attributes (for computer administration). • During installation, do not install any other software. • During installation, do not remove the CD-ROM from the CD-ROM drive.

3.2.1 Installing the software for GOT900 series

POINT	
<ul style="list-style-type: none"> • Install the update-only product into the personal computer where the product of old version is installed. • To make preparations for installation, any of the screens 1 to 3 may be displayed during installation. When any of the screens 1 to 3 appears, follow the prompt given on the corresponding screen and execute the specified exe file, and then install the product again. If product installation is not performed properly, restart the computer once. 	
<p>When the screen on the right appears, execute \Update\ldcom95.exe of the CD-ROM.</p>	<p>(Screen 1)</p> 
<p>When the screen on the right appears, execute \Update\Axdist.exe of the CD-ROM.</p>	<p>(Screen 2)</p> 
<p>When the screen on the right appears, execute \EnvMEL\Setup.exe of the CD-ROM.</p>	<p>(Screen 3)</p> 

This section describes how to install GT Designer, GT SoftGOT, GT Simulator.



- 1) Click "GT Designer Install" or "GT SoftGOT Install" or "GT Simulator Install" on Setup to start the installer of the corresponding software.



[Only for installation of GT SoftGOT]



- 2) If "GT SoftGOT Install" is selected in setup, the screen shown at the left will display.

"GT SoftGOT Install"

Install GT SoftGOT. (Perform the install operation from step 4)).

"System Driver"

Select to install or uninstall System Driver.

It is not necessary to install System Driver when the PC CPU module is used.



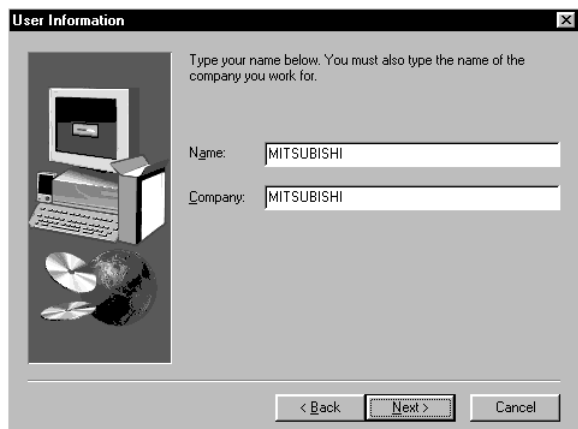
To the following page

*If you do not install System Driver, GT SoftGOT will not recognize the license key even if the license key is installed, so take care.

From the previous page



[For the exclusive product for updating]



To the following page

3) Only when the update-only product is to be installed, the dialog box which indicates that the software is an exclusive product for updating. Clicking the button checks whether the program may be updated or not. If it has resulted in any problem, the following dialog box appears.

When the message shown on the left has appeared, always install the program in the personal computer containing the previous version.

When the message shown on the left has appeared, install the program in the personal computer containing the language (English) which is the same as that of the package to be installed.

When the message shown on the left has appeared, you need not upgrade the software since the package of the latest version has already been installed.

4) Input your name and the company name and click .

From the previous page



5) Input the product ID of the product and click **Next >**.

The product ID is shown on the "Software registration certificate" accompanying the product.



6) Designate the folder for installation.

The installation destination folder defaults as follows.

GT Designer : "C:\MELSEC\GOTR".

GT SoftGOT : "C:\MELSEC".

GT Simulator: "C:\MELSEC".

If the default is acceptable, click **Next >**.

To change the default, click **Browse** and specify the drive and folder for installation.



[Only for installation of GT Designer]



7) Only for installation of GT Designer, Select the desired setup and click **Next >**.

For selection of standard and compact setup, go to 8).

For selection of custom setup, go to 7).

<Typical>

The following software and data are installed.

- GT Designer
- GT Converter
- Sample screen data
- Microcomputer connecting sample program
- GT Debugger
- GT Manager
- 256 Color Test Data

<Compact>

The following software and data are installed.

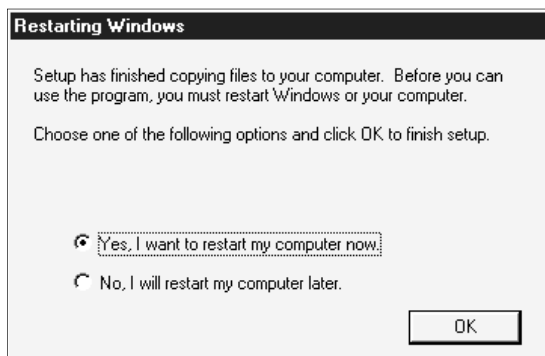
- Drawing software for GOT900

<Custom>

Software and data selected by the user is installed.

To the following page

From the previous page



To the following page

8) Check the check box of the item to be installed and then click **Next**.

When **Change** is clicked, the details of the selected item shown below can be set.

<Details>

- Designer
Designer Software (GT designer), Help Files, 256 Color Test Data, Debugging Software (GT Debugger), and Project Manager can be selected.
- Special Function Data
Monitoring screen data for each special unit can be selected.
- GOT Operating system (OS)
Standard OS, extended function OS and communication driver can be selected.
- Converter
There are no detailed items.

9) Installation starts.

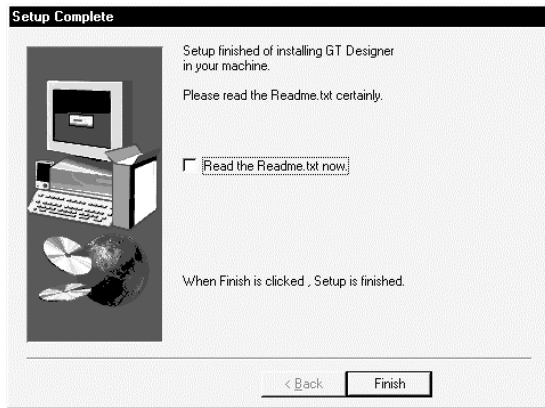
As the screen shown on the left appears on completion of installation, click **OK**.

10) If the left screen appears, you must restart Windows®.

From the previous page



[Only for installation of GT Designer]

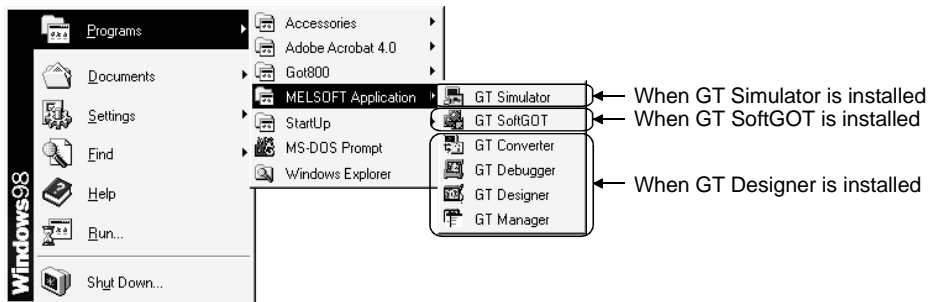


11) Only for installation of GT Designer, As the screen for selecting whether you read the Readme file now or not appears, make selection in the check box and then click **Finish** to terminate installation.

After termination of installation, start each software package and check whether it has been installed properly.

For the way of starting each software package, refer to Section 3.4.

Installing GT Designer (standard) or GT SoftGOT or GT Simulator registers the icon as shown below.



3.2.2 Installing SW3NIW-GOT800PSET

This section provides how to install SW3NIW-GOT800PSET.

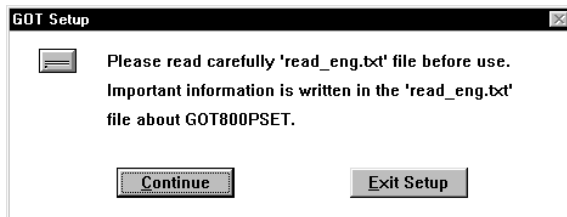
POINT

On your personal computer, the hard disk must have the free space 10MB.

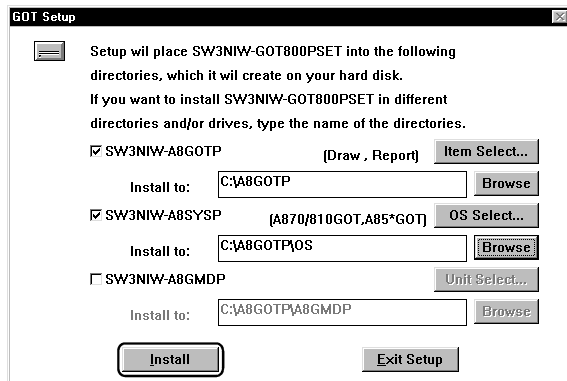


1) Click "GOT800 Install" on Setup to start the installer of SW3NIW-GOT800PSET.

[For the exclusive product for updating]



2) As the [GOT Setup] dialog box appears, click **Continue**.



3) Click the corresponding unchecked check boxes to choose the data to be installed.

- SW3NIW-A8GOTP: Drawing software
- SW3NIW-A8SYSP: OS program
- SW3NIW-A8GMDP: Special module monitor data (You need not select SW3NIW-A8GMDP when you do not use the GOT800 series special module monitor function.)

By clicking **Item Select**, **OS Select** and **Unit Select** as required, you can change the details of the installed data. (Refer to POINT.)

When changing the installation destination, click **Browse** and specify the new drive and folder.

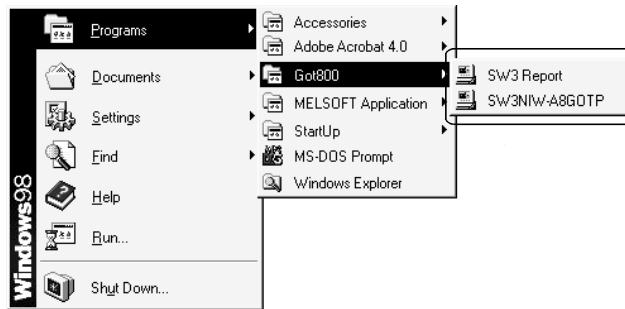
4) When setting is finished, click [Install].

5) Installation starts.

On completion of installation, the screen shown on the left appears. Click **OK** to finish installation.



When SW3NIW-GOT800PSET is installed in the initial setting status, the icons are registered as shown below.



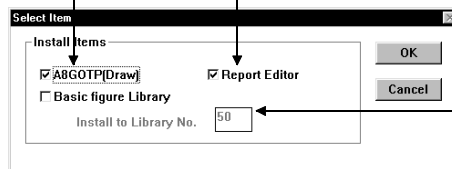
POINT

- When you clicked **Item Select**

As the following screen appears, set the installation details of SW3NIW-A8GOTP.

Drawing software is installed.

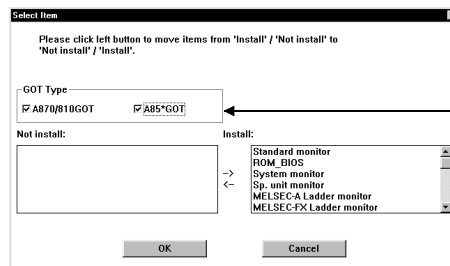
Drawing software for report is installed.



Set the library number used to install the basic figure library.

- When you clicked **OS Select**

As the following screen appears, set the installation details of SW3NIW-A8SYSP.

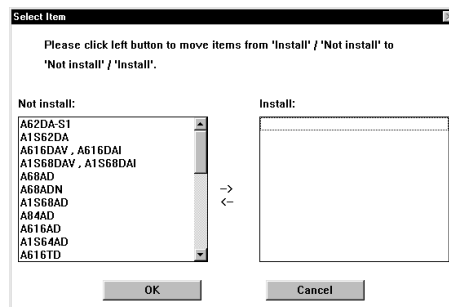


Click the unchecked check box to choose the GOT used.

Click the corresponding items to choose the functions which will be used or not used.

- When you clicked **Unit Select**

As the following screen appears, set the installation details of SW3NIW-A8GMDP.



Click the corresponding items to choose the modules which will be installed or not installed.

3.2.3 Installing Acrobat Reader

This section gives how to install Acrobat Reader.

POINT
 On your personal computer, the hard disk must have the free space of 8MB.

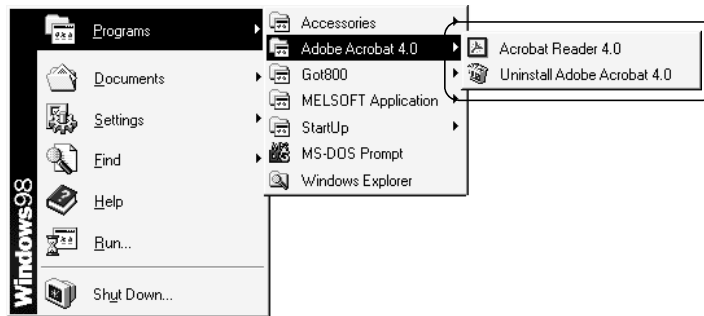


- 1) Click "Acrobat Reader Install" on Setup to start the installer of Acrobat Reader.
- 2) Follow the instructions of the installer of Acrobat Reader to perform installing operation.



- 3) On completion of installation, the screen shown on the left appears. Click to finish installation.

When Acrobat Reader is installed in the initial setting status, the icons are registered as shown below.



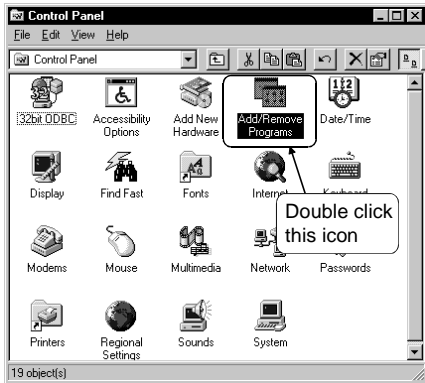
POINT
 Acrobat 4.05 Update 2 is stored in GT Works Version 5 or GT Designer Version 5. (Stored in the "Acrobat" folder.)
 Refer to the Adobe Co. homepage for more information about Acrobat 4.05 Update 2.

3.3 Uninstall each software

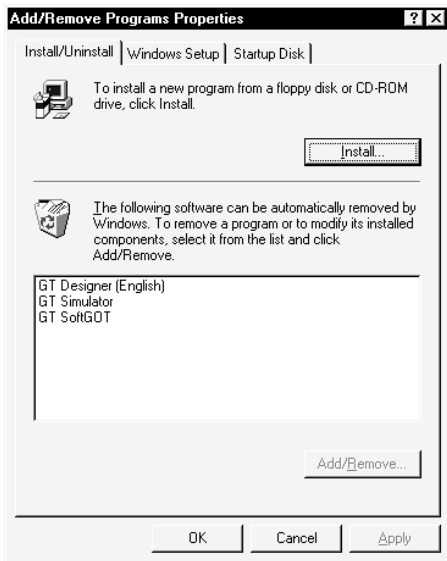
<p>POINT</p> <ul style="list-style-type: none"> • Before uninstall, be sure to end each software package. • When using Windows® NT Workstation 4.0 or Windows® 2000, log on as a user having the administrator attributes (for computer administration).

3.3.1 Uninstalling the software for GOT900 series

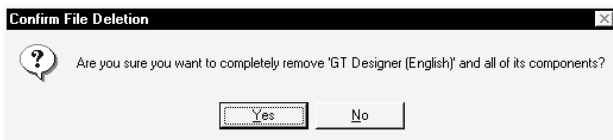
This section describes operations for deleting GT designer, GT Simulator from hard disk.



- 1) Select the "Add/Remove Programs" from the control panel and double click it.
To display Control Panel, choose [Start]-[Settings]-[Control Panel].



- 2) Choose "GT Designer [English]" or "GT Simulator".
 GT Designer : GT Designer is uninstalled.
 GT SoftGOT : GT SoftGOT is uninstalled.
 GT Simulator : GT Simulator is uninstalled.

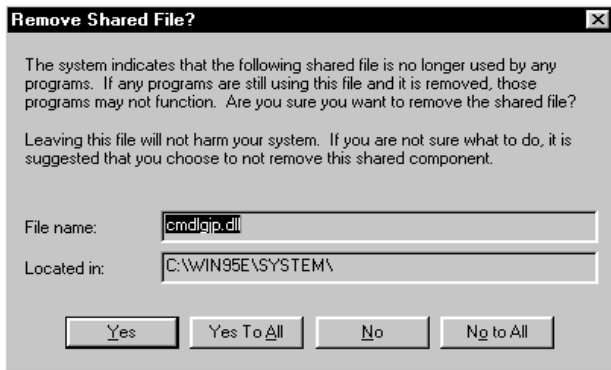


- 3) Check if the software package is deleted.
 To uninstall, click
 Uninstall starts.
 Not to uninstall, click to return to the previous screen.

* Component means the installed icon and the files.

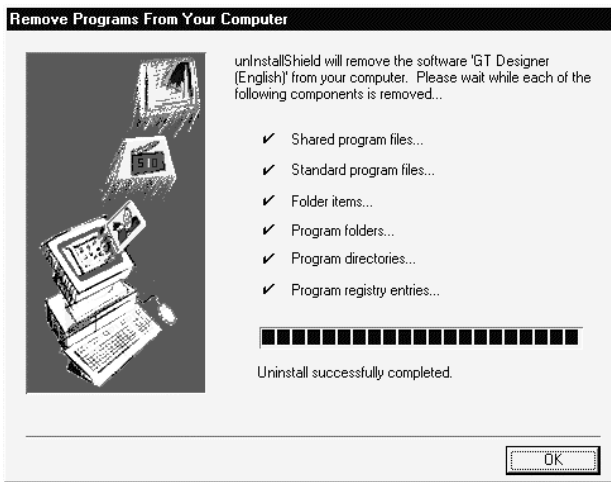
To the following page

From the previous page



4) When the screen as shown on the left (file name and place may be different) has appeared, click .

* If you click or , the shard files of the MELSOFT software package group will be deleted and the other software packages may not operate.



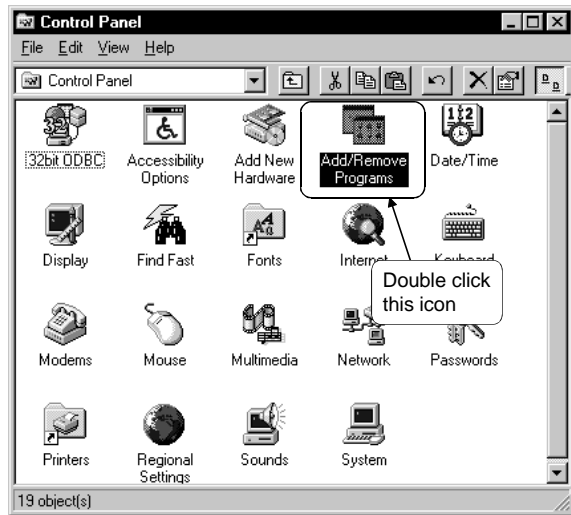
5) Now, uninstall is completed. Click .

3.3.2 Uninstalling SW3NIW-GOT800PSET

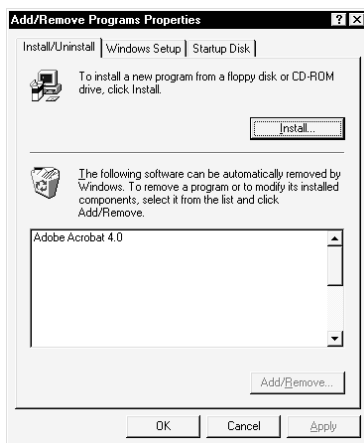
When you want to delete SW3NIW-GOT800PSET from the hard disk, delete all folders created at the time of installation (the folders at the installation destination and the folders added to the start menu) using Explorer.

3.3.3 Uninstalling Acrobat Reader

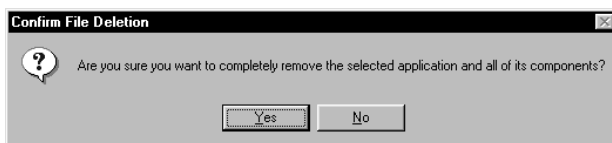
This section explains the operation to delete Acrobat Reader from the hard disk.



- 1) Select the "Add/Remove Programs" from the control panel and double click it.
To display Control Panel, choose [Start]-[Settings]-[Control Panel].



- 2) Select "Adobe Acrobat Reader4.0".
After selection, click .



- 3) Check if the software package is deleted.

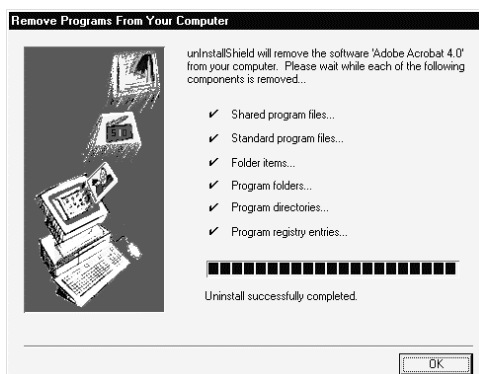
To uninstall, click .

Uninstall starts.

Not to uninstall, click to return to the previous screen.

- * Component means the installed icon and the files.

- 4) Now, uninstall is completed. Click .



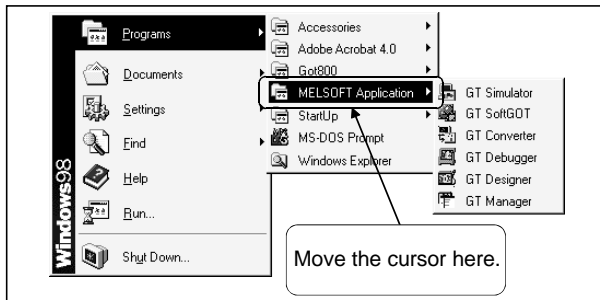
3.4 Start-up of each software package

3.4.1 Starting the software for GOT900 series

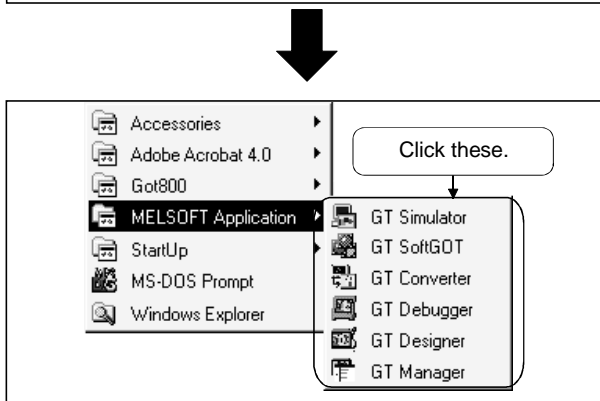
POINT

It is necessary to register the license in the PC CPU module with the license key FD when using the GT SoftGOT installed in the PC CPU module.
 For the registration procedure of the license key FD, please refer to the GT SoftGOT Version5 Operating Manual.

This section explains how to start the required software package.



- 1) Power on the personal computer and start of Windows®.
- 2) Click [Start] and move the cursor to the [Programs]-[MELSOFT Applications] menu.



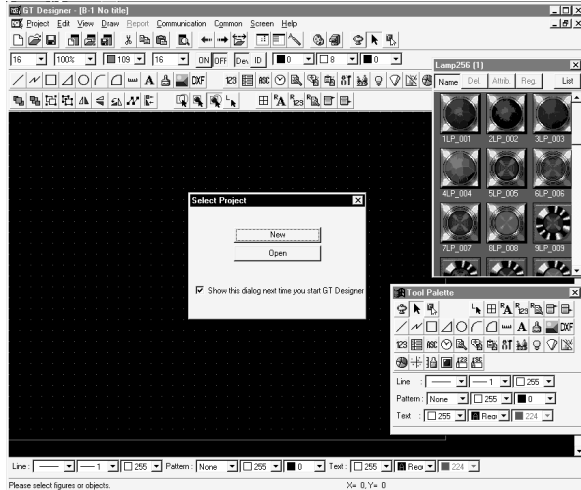
- 3) Click the software package menu to start.

To the following page

From the previous page



For start-up of drawing software



4) Each software package starts.

<Error messages displayed at start>

"Internal error: null pointer access"

If the above error has appeared, change the setting in the following procedure.

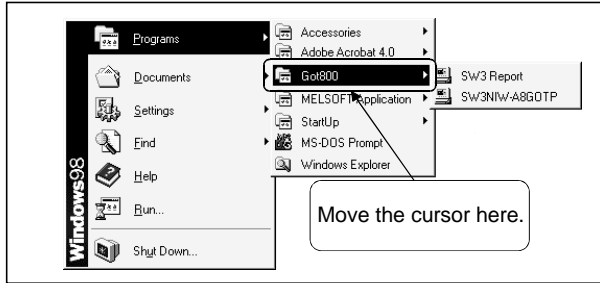
1. Click "Start", point to the [Settings]-[Control Panel] menu, and click.
2. Double-click the [Regional Settings] icon.
3. As the [Regional Settings Property] dialog box appears, choose "English". If the above message appears with the setting of "English", choose the language other than English and restart the personal computer. After a start, choose "English" again and restart the personal computer.

"Abnormal termination"

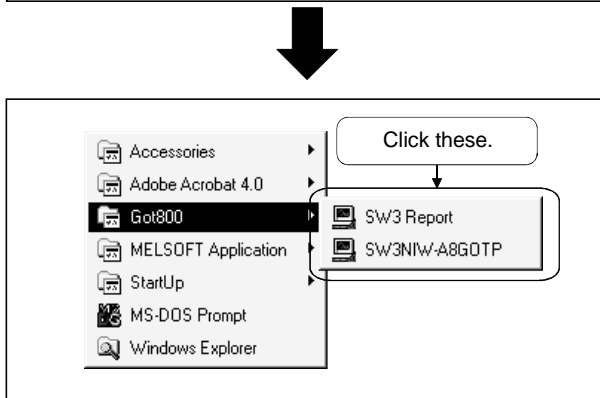
If the above error has appeared, check whether the hard disk has the free capacity of 50MB or more.

3.4.2 Starting SW3NIW-GOT800PSET

This section explains how to start the required software package.

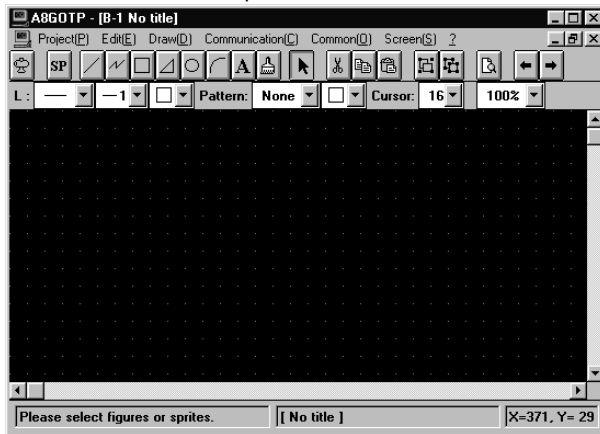


- 1) Power on the personal computer and start of Windows®.
- 2) Click [Start] and move the cursor to the [Programs]-[Got800] menu.



- 3) Click the software package menu to start.
 - <To start SW3NIW-A8GOTP>
Click the [SW3NIW-A8GOTP] menu.
 - <To start SW3 Report>
Click the [SW3 Report] menu.

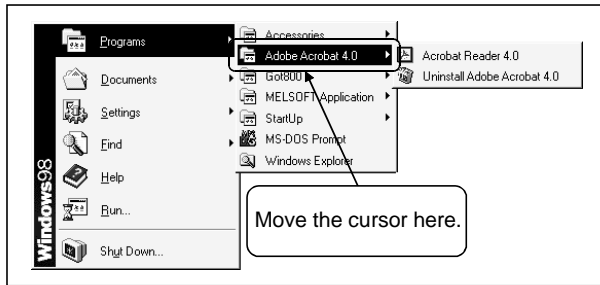
For start-up of SW3NIW-A8GOTP



- 4) Each software package starts.

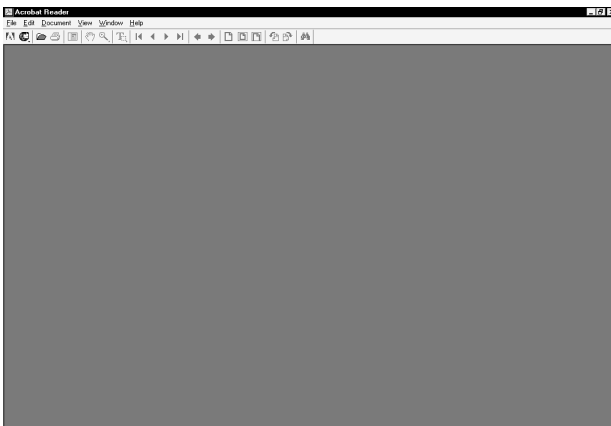
3.4.3 Starting Acrobat Reader

This section explains how to start the Acrobat Reader.



1) Power on the personal computer and start of Windows®.

2) Click [Start] and choose [Programs]-[Adobe Acrobat 4.0]-[Adobe Acrobat 4.0].



3) Acrobat reader starts.

POINT

The Software License Agreement appears when you attempt to start Acrobat Reader after its installation. Reading this Software License Agreement carefully and choosing "Accept" allows you to browse the PDF data such as online manuals. If you attempt to browse the PDF data before choosing "Accept", Acrobat Reader will not start. In this case, restarting the personal computer and choosing "Accept" in the above method enables you to use Acrobat Reader.

Chapter4 How to use the online manuals

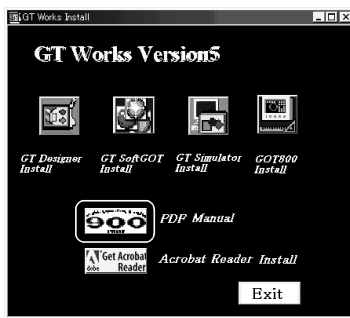
The online manuals are contained in the GT Works Version5/GT Designer Version5 CD-ROM as PDF data.

To browse the PDF data, install Acrobat Reader. (Refer to Section 3.2.3.)

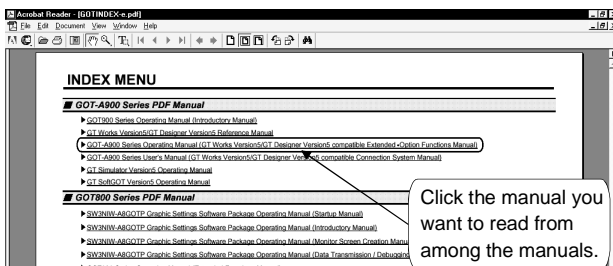
POINT

Before browsing the online manuals, you must read the Software License Agreement of Acrobat Reader carefully and choose "Accept". (Refer to Section 3.4.3.)

The online manuals start from Setup of the CD-ROM. Refer to Section 3.1 for the way to start Setup.



- 1) Click "PDF Manual" on Setup to start Acrobat Reader.



- 2) When Acrobat Reader starts, the INDEX_MENU screen appears.
- 3) Choose and click the manual you want to read from among the manuals displayed on the INDEX_MENU screen.



- 4) The manual you chose appears. Clicking any contents item of the "bookmark display section (left side of the window)" changes the "manual display section (right side of the window)" screen. Clicking "INDEX_MENU" in the "bookmark display section" returns to the INDEX_MENU screen (manual selection screen).

* For details of how to operate Acrobat Reader, refer to Help of Acrobat Reader.

HEADQUARTERS

MITSUBISHI ELECTRIC EUROPE B.V. EUROPE
Gothaer Straße 8
D-40880 Ratingen
Phone: +49 (0) 21 02 / 486-0
Fax: +49 (0) 21 02 / 4 86-11 20
e mail: megfamail@meg.mee.com

MITSUBISHI ELECTRIC EUROPE B.V. FRANCE
25, Boulevard des Bouvets
F-92741 Nanterre Cedex
Phone: +33 1 55 68 55 68
Fax: +33 1 55 68 56 85
e mail: factory.automation@fra.mee.com

MITSUBISHI ELECTRIC EUROPE B.V. UK
Travellers Lane
GB-Hatfield Herts. AL10 8 XB
Phone: +44 (0) 1707 / 27 61 00
Fax: +44 (0) 1707 / 27 86 95

MITSUBISHI ELECTRIC EUROPE B.V. ITALY
Via Paracelso 12
I-20041 Agrate Brianza (MI)
Phone: +39 039 6053 1
Fax: +39 039 6053 312
e mail: factory.automation@it.mee.com

MITSUBISHI ELECTRIC EUROPE B.V. SPAIN
Carretera de Rubí 76-80
E-08190 Sant Cugat del Vallés
Phone: +34 9 3 / 565 3131
Fax: +34 9 3 / 589 2948
e mail: industrial@sp.mee.com

MITSUBISHI ELECTRIC CORPORATION JAPAN
Office Tower "Z" 14 F
8-12,1 chome, Harumi Chuo-Ku
Tokyo 104-6212
Phone: +81 3 6221 6060
Fax: +81 3 6221 6075

MITSUBISHI ELECTRIC AUTOMATION USA
500 Corporate Woods Parkway
Vernon Hills, IL 60061
Phone: +1 847 / 478 21 00
Fax: +1 847 / 478 22 83

EUROPEAN REPRESENTATIVES

GEVA AUSTRIA
Wiener Straße 89
A-2500 Baden
Phone: +43 (0) 2252 / 85 55 20
Fax: +43 (0) 2252 / 488 60
e mail: office@geva.at

TEHNIKON BELARUS
Oktjabrskaya 16/5, Ap 704
BY-220030 Minsk
Phone: +375 (0) 17 / 22 75 704
Fax: +375 (0) 17 / 22 76 669
e mail: tehnikon@belsonet.net

Getronics b.v. BELGIUM
Control Systems
Pontbeeklaan 43
B-1731 Asse-Zellik
Phone: +32 (0) 2 / 467 17 51
Fax: +32 (0) 2 / 467 17 45
e mail: infoautomation@getronics.com

TELECON CO. BULGARIA
4, A. Ljapchev Blvd.
BG-1756 Sofia
Phone: +359 (0) 2 / 97 44 05 8
Fax: +359 (0) 2 / 97 44 06 1
e mail: —

INEA CR d.o.o. CROATIA
Drvinje 63
HR-10000 Zagreb
Phone: +385 (0) 1 / 36 67 140
Fax: +385 (0) 1 / 36 67 140
e mail: —

AutoCont CZECHIA
Control Systems s.r.o.
Nemocnicni 12
CZ-702 00 Ostrava 2
Phone: +420 59 / 6152 111
Fax: +420 59 / 6152 562
e mail: consys@autocont.cz

louis poulsen DENMARK
industri & automation
Geminivej 32
DK-2670 Greve
Phone: +45 (0) 43 / 95 95 95
Fax: +45 (0) 43 / 95 95 91
e mail: lpia@lpmail.com

UTU Elektrotehnika AS ESTONIA
Pärnu mnt.160i
EE-11317 Tallinn
Phone: +372 (0) 6 / 51 72 80
Fax: +372 (0) 6 / 51 72 88
e mail: utu@utu.ee

Beijer Electronics OY FINLAND
Ansatie 6a
FIN-01740 Vantaa
Phone: +358 (0) 9 / 886 77 500
Fax: +358 (0) 9 / 886 77 555
e mail: info@beijer.fi

PROVENDOR OY FINLAND
Teljänkatu 8 A 3
FIN-28130 Pori
Phone: +358 (0) 2 / 522 3300
Fax: +358 (0) 2 / 522 3322
e mail: —

UTECO A.B.E.E. GREECE
5, Mavrogenous Str.
GR-18542 Piraeus
Phone: +302 (0) 10 / 42 10 050
Fax: +302 (0) 10 / 42 12 033
e mail: uteco@uteco.gr

Meltrade Automatika Kft. HUNGARY
55, Harmat St.
H-1105 Budapest
Phone: +36 (0)1 / 2605 602
Fax: +36 (0)1 / 2605 602
e mail: office@meltrade.hu

EUROPEAN REPRESENTATIVES

MITSUBISHI ELECTRIC EUROPE B.V. IRELAND
Westgate Business Park
IRL-Dublin 24
Phone: +353 (0) 1 / 419 88 00
Fax: +353 (0) 1 / 419 88 90
e mail: sales.info@meir.mee.com

SIA POWEL LATVIA
Lienes iela 28
LV-1009 Riga
Phone: +371 784 / 22 80
Fax: +371 784 / 22 81
e mail: utu@utu.lv

UAB UTU POWEL LITHUANIA
Savanoriu pr. 187
LT-2053 Vilnius
Phone: +370 (0) 52323-101
Fax: +370 (0) 52322-980
e mail: powel@utu.lt

INTEHSIS SRL MOLDOVA, REPUBLIC OF
Cuza-Voda 36/1-81
MD-2061 Chisinau
Phone: +373 (0)2 / 562 263
Fax: +373 (0)2 / 562 263
e mail: intehsis@mdl.net

Getronics b.v. NETHERLANDS
Control Systems
Donauweg 2 B
NL-1043 AJ Amsterdam
Phone: +31 (0) 20 / 587 67 00
Fax: +31 (0) 20 / 587 68 39
e mail: info.gia@getronics.com

Beijer Electronics AS NORWAY
Teglværksveien 1
N-3002 Drammen
Phone: +47 (0) 32 / 24 30 00
Fax: +47 (0) 32 / 84 85 77
e mail: info@beijer.no

MPL Technology Sp. z o.o. POLAND
ul. Sliczna 36
PL-31-444 Kraków
Phone: +48 (0) 12 / 632 28 85
Fax: +48 (0) 12 / 632 47 82
e mail: krakow@mpl.pl

Sirius Trading & Services srl ROMANIA
Bd. Lacul Tei nr. 1 B
RO-72301 Bucuresti 2
Phone: +40 (0) 21 / 201 7147
Fax: +40 (0) 21 / 201 7148
e mail: sirius_t_s@fx.ro

ACP Autocomp a.s. SLOVAKIA
Chalupkova 7
SK-81109 Bratislava
Phone: +421 (02) / 5292-22 54, 55
Fax: +421 (02) / 5292-22 48
e mail: info@acp-autocomp.sk

INEA d.o.o. SLOVENIA
Stegne 11
SI-1000 Ljubljana
Phone: +386 (0) 1-513 8100
Fax: +386 (0) 1-513 8170
e mail: inea@inea.si

Beijer Electronics AB SWEDEN
Box 426
S-20124 Malmö
Phone: +46 (0) 40 / 35 86 00
Fax: +46 (0) 40 / 35 86 02
e mail: info@beijer.se

ECONOTEC AG SWITZERLAND
Postfach 282
CH-8309 Nürensdorf
Phone: +41 (0) 1 / 838 48 11
Fax: +41 (0) 1 / 838 48 12
e mail: info@econotec.ch

EUROPEAN REPRESENTATIVES

GTS TURKEY
Darülaceze Cad. No. 43 KAT: 2
TR-80270 Okmeydani-Istanbul
Phone: +90 (0) 212 / 320 1640
Fax: +90 (0) 212 / 320 1649
e mail: gts@turk.net

CSC Automation Ltd. UKRAINE
15, M. Raskova St., Fl. 10, Office 1010
UA-02002 Kiev
Phone: +380 (0) 44 / 238-83-16
Fax: +380 (0) 44 / 238-83-17
e mail: csc-a@csc-a.kiev.ua

AFRICAN REPRESENTATIVE

CBI Ltd SOUTH AFRICA
Private Bag 2016
ZA-1600 Isando
Phone: +27 (0) 11 / 928 2000
Fax: +27 (0) 11 / 392 2354
e mail: cbi@cbi.co.za

MIDDLE EAST REPRESENTATIVE

TEXEL Electronics LTD. ISRAEL
Box 6272
IL-42160 Netanya
Phone: +972 (0) 9 / 863 08 91
Fax: +972 (0) 9 / 885 24 30
e mail: texel_me@netvision.net.il

EURASIAN REPRESENTATIVE

AVTOMATIKA SEVER RUSSIA
Krapivnij Per. 5, Of. 402
RU-194044 St Petersburg
Phone: +7 812 / 1183 238
Fax: +7 812 / 3039 648
e mail: pav@avtsev.spb.ru

CONSYS RUSSIA
Promyshlennaya St. 42
RU-198099 St Petersburg
Phone: +7 812 / 325 36 53
Fax: +7 812 / 325 36 53
e mail: consys@consys.spb.ru

ELEKTROSTYLE RUSSIA
Ul Garschina 11
RU-140070 Moscovskaja Oblast
Phone: +7 095 / 261 3808
Fax: +7 095 / 261 3808
e mail: —

ICOS RUSSIA
Industrial Computer Systems Zao
Ryazanskij Prospekt 8a, Office 100
RU-109428 Moscow
Phone: +7 095 / 232 - 0207
Fax: +7 095 / 232 - 0327
e mail: mail@icos.ru

NPP Uralelektra RUSSIA
Sverdlova 11a
RU-620027 Ekaterinburg
Phone: +7 34 32 / 53 27 45
Fax: +7 34 32 / 53 27 45
e mail: elektra@etel.ru

STC Drive Technique RUSSIA
Poslannikov Per. 9, str.1
RU-107005 Moscow
Phone: +7 095 / 786 21 00
Fax: +7 095 / 786 21 01
e mail: info@privod.ru